

V.5. Taxon E: Blades
(21 items; #1098–1118)

#1098. Item no. 2185-17218

Exc. nr.	Discovery date	Square-subsq.	Depth range Z(D)	Depth Z(datum)	UTM E (x)	UTM N (y)	Stratum	Stratig. comp. (SC)
X16	08/01/2019	A2-SE	-	6.63	283905.11	2724523.82	1606	C
Taxon code	Taxon definition	Length (mm)	Width (mm)	Thickness (mm)	Weight (g)	Raw material class		
E	Blade	30.3	12	6.6	2.21	V		



Characterization. This small artefact is a fine, secondary, corner blade of green limestone, with an uneven coating of fine-grained sediment covering both sides. It has a small, faceted, isolated platform at the right margin of the proximal section (the wider end). The distal end is thin, with a feather termination. The right dorsal side is naturally flat; the left one presents the extraction planes of previous flakes or blades. This was obtained from the corner area of an already started





tabular core. The ventral side is curved and smooth. No evidence of post-extraction modifications or use-wear is visible on the edges.

#1099. Item no. 2700-17043



Exc. nr.	Discovery date	Square-subsq.	Depth range Z(D)	Depth Z(datum)	UTM E (x)	UTM N (y)	Stratum	Stratig. comp. (SC)
X16	17/01/2019	A2-SE	-	6.45	283905.44	2724523.68	1606	C

Taxon code	Taxon definition	Length (mm)	Width (mm)	Thickness (mm)	Weight (g)	Raw material class		
E	Blade	28.2	7.1	3.3	0.64	V		



Characterization. This fine, narrow artefact is a remarkable, ridge-following, tertiary microblade of green limestone with calcite intrusions. Unlike the rest of the materials in SC-C, this item barely has scarce coating of sediment on its surfaces. The platform is missing, collapsed under impact, but its location on the proximal end is confirmed by a shallow lip preserved below the transversal fracture plane. The distal end has a feathered termination, with its sharpness reduced by the bulky texture of the calcite. The edges are thin and sharp, with all the potential to be used as an effective cutting tool, but they lack clear evidence of use-wear.

#1100. Item no. 3799-17187

Exc. nr.	Discovery date	Square-subsq.	Depth range Z(D)	Depth Z(datum)	UTM E (x)	UTM N (y)	Stratum	Stratig. comp. (SC)
X16	02/02/2019	A6-NW	-	5.73	283904.82	2724528.06	s/1606	C

Taxon code	Taxon definition	Length (mm)	Width (mm)	Thickness (mm)	Weight (g)	Raw material class		
E	Blade	25	13.3	4.7	1.54	V		



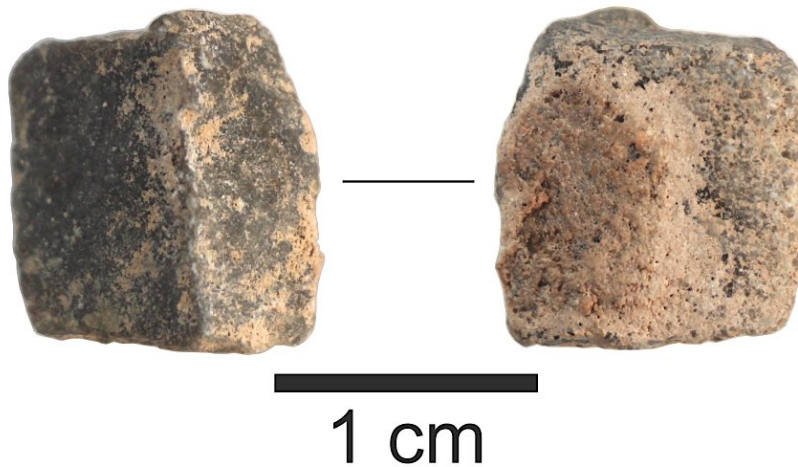
Characterization. This artefact is a secondary blade or blade-like flake, extracted from the corner of a tabular core of green limestone. The platform (here, upwards) is partly preserved, standing out as a partly isolated and ground, white-dotted protuberance, associated on the adjacent section of the dorsal side with a collateral flake extraction produced during repeated percussion impacts. The ventral face is rugged, with impact striations and ripples infilled with cemented fine-grained sediment. The dorsal



ridge is displaced towards the right side, defining a narrow, flat surface, next to a wide cortical left side. The edges show no clear evidence of use-wear or tool functions.

#1101. Item no. 3800-17114

Exc. nr.	Discovery date	Square-subsq.	Depth range Z(D)	Depth Z(datum)	UTM E (x)	UTM N (y)	Stratum	Stratig. comp. (SC)
X16	02/02/2019	A6-NW	-	5.70	283904.77	2724528.33	s/1606	C
Taxon code	Taxon definition	Length (mm)	Width (mm)	Thickness (mm)	Weight (g)	Raw material class		
E	Blade	13.2	12.9	6.6	1.50	V		



Characterization. This item is a microlith, the medial fragment of a thick, tall-ridged blade of dark-green limestone, with a stain of calcite concretions on the ventral side that indicates a prolonged permanency while exposed on the surface of the stratum, in the vicinity of a dripping spot falling from the ceiling. Both ends are missing, removed by fractures, presumably intentional. The dorsal ridge is displaced sideways. The edges are rather thick, blunt, and they

fail to produce compelling evidence of use-wear or other post-extraction modifications. Despite that, the primary intention for this item was probably to be used as a microlith implement, as part of a composite tool.



#1102. Item no. 4097-17131

Exc. nr.	Discovery date	Square-subsq.	Depth range Z(D)	Depth Z(datum)	UTM E (x)	UTM N (y)	Stratum	Stratig. comp. (SC)
X16	08/02/2019	A6-SW	-	5.63	283904.64	2724527.96	1606	C
Taxon code	Taxon definition	Length (mm)	Width (mm)	Thickness (mm)	Weight (g)	Raw material class		
E	Blade	24.9	11	5.3	1.38	V(b)		



Characterization. This item is a simple microblade of black limestone, with a confusing morphology and undetectable platform. If artificial in origin, this would be a simple debitage element, a tertiary bladelet or blade-like flake following a low ridge. The edges show no evidence of use-wear.



#1103. Item no. 4211-17139

Exc. nr.	Discovery date	Square-subsq.	Depth range Z(D)	Depth Z(datum)	UTM E (x)	UTM N (y)	Stratum	Stratig. comp. (SC)
X16	12/02/2019	A6-SW	5.65/ 5.60	5.62	283904.67	2724527.84	1606	C
Taxon code	Taxon definition	Length (mm)	Width (mm)	Thickness (mm)	Weight (g)	Raw material class		
E	Blade	21.5	11.9	5.9	1.74	NI		



Characterization. This item is a fragmented, tall-ridged, probably corner blade, completely coated in a thick layer of yellowish cemented carbonate sediment, with the raw material impossible to assess under the coverage. Both ends are missing, severed by fractures. The edges cannot be assessed for potential use-wear.



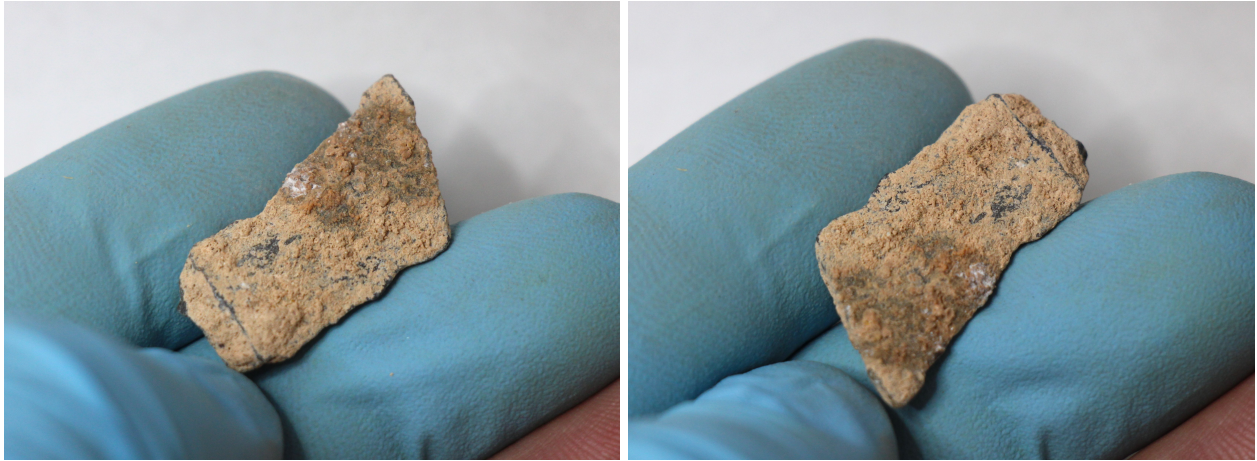
#1104. Item no. 4219-17140

Exc. nr.	Discovery date	Square-subsq.	Depth range Z(D)	Depth Z(datum)	UTM E (x)	UTM N (y)	Stratum	Stratig. comp. (SC)
X16	12/02/2019	A6-SE	5.70/5.65	5.67	283905.12	2724527.74	1606	C
Taxon code	Taxon definition	Length (mm)	Width (mm)	Thickness (mm)	Weight (g)	Raw material class		
E	Blade	24.5	13.9	4.7	1.61	V		



Characterization. This artefact is a thin, tertiary, fragmented blade of dark-green limestone, with a thick coverage of cemented muddy carbonate sediment on both faces, obstructing the proper evaluation of the morphological and functional features. The proximal end is damaged, and the platform is missing. The distal end represents a diagonal fracture plane that removed

the distal end. The edges have certain possible indicators of use, but the assessment of use-wear is not possible.



#1105. Item no. 4253-17440



Exc. nr.	Discovery date	Square-subsq.	Depth range Z(D)	Depth Z(datum)	UTM E (x)	UTM N (y)	Stratum	Stratig. comp. (SC)
X16	16/02/2019	A6-NW	-	5.44	283904.79	2724528.33	1606	C
Taxon code	Taxon definition	Length (mm)	Width (mm)	Thickness (mm)	Weight (g)	Raw material class		

E	Blade	41.3	16	5.5	3.38	V		
---	-------	------	----	-----	------	---	--	--



Characterization. This item is a thin tertiary blade of pale-green limestone, with feathered termination, and the dorsal surface covered by an orange-brown carbonate patina. The platform is missing, broken. The dorsal ridge has a sinuous trajectory. The edges lack evidence of use-wear or other post-extraction anthropic modifications.

#1106. Item no. 4276-17142



Exc. nr.	Discovery date	Square-subsq.	Depth range Z(D)	Depth Z(datum)	UTM E (x)	UTM N (y)	Stratum	Stratig. comp. (SC)
X16	17/02/2019	A6-NE	5.55/5.50	5.52	283905.12	2724528.24	1606	C
Taxon code	Taxon definition	Length (mm)	Width (mm)	Thickness (mm)	Weight (g)	Raw material class		
E	Blade	65.7	18	13.5	14.98	V		



Characterization. This remarkable artefact is a large, curved, high-ridged, primary (cortical) corner blade, probably a starter blade, extracted from the corner of a tabular core of green limestone. It has a very small triangular platform, collapsed under impact. The distal end presents natural damage. The curved ventral side is smooth, without further interventions. The edges show no evidence of use-wear or post-extraction modifications.



#1107. Item no. 4284-17143

Exc. nr.	Discovery date	Square-subsq.	Depth range Z(D)	Depth Z(datum)	UTM E (x)	UTM N (y)	Stratum	Stratig. comp. (SC)
X16	18/02/2019	A6-NE	-	5.46	283905.02	2724528.29	1606	C
Taxon code	Taxon definition	Length (mm)	Width (mm)	Thickness (mm)	Weight (g)	Raw material class		
E	Blade	18.5	22	8.6	4.11	V		



Characterization. This item is the medial fragment of a relatively thick prismatic blade, possibly prepared for a microlith tool, made of green limestone, coated by yellowish patina on the dorsal side, with a rugged ventral side that also shows a recent, post-depositional extraction. The eroded dorsal side reveals three previous microblade extractions. The wide proximal end is a straight fracture plane, and same is the narrower distal one. The edges of the artefact lack evidence of use-wear or functionality indicators.

#1108. Item no. 3032-17061

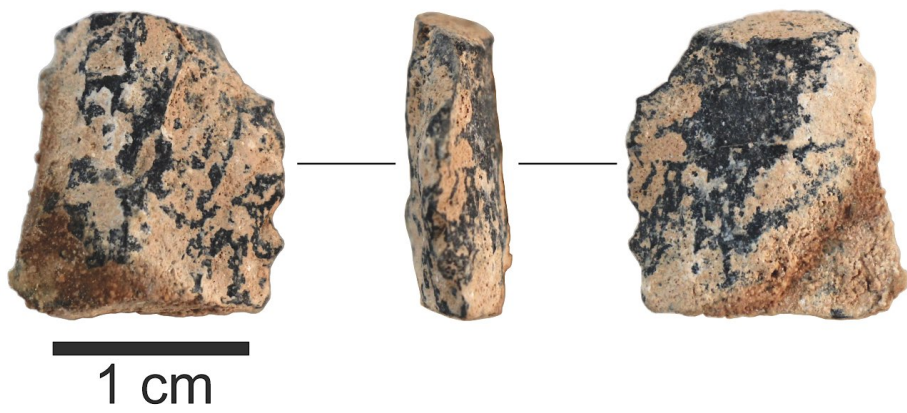
Exc. nr.	Discovery date	Square-subsq.	Depth range Z(D)	Depth Z(datum)	UTM E (x)	UTM N (y)	Stratum	Stratig. comp. (SC)
X16	20/01/2019	A7-SW	-	5.67	283904.66	2724528.62	1606	C
Taxon code	Taxon definition	Length (mm)	Width (mm)	Thickness (mm)	Weight (g)	Raw material class		
E	Blade	28.8	17.6	8.4	5.36	V		

Characterization. This artefact is the distal fragment of a prismatic blade of green limestone, with the entire surface coated by a uniform layer of orange-brown cemented carbonate sediment. The cross-section has an asymmetrical trapezoidal shape. The dorsal side reveals the extraction scars of previous blades. The plunging distal end is thinner, but it lacks evidence



of retouch. The ventral side is curved. Despite the presence of certain micro-notches obstructed by coating, the edges lack evidence of use-wear or post-extraction modification.

#1109. Item no. 3090-17065



Exc. nr.	Discovery date	Square-subsq.	Depth range Z(D)	Depth Z(datum)	UTM E (x)	UTM N (y)	Stratum	Stratig. comp. (SC)
X16	20/01/2019	A7-SW	5.69/ 5.65	5.67	283904.77	2724528.94	1606	C
Taxon code	Taxon definition	Length (mm)	Width (mm)	Thickness (mm)	Weight (g)	Raw material class		
E	Blade	15.7	13.8	5.6	1.41	V(b)		



Characterization. This artefact is the proximal fragment of a blade or blade-like flake of black limestone, with thick depositions of sediment on both surfaces, and with the distal section removed by fracture. The item has a wide, flat, lipped platform, tilted towards the ventral side. The cross-section is lenticular (flat biconvex). The dorsal side is rugged. A darker stain on the distal-left corner indicates proximity to ceiling dripping falling on the surface of its stratum. The edges show no evidence of use-wear.

#1110. Item no. 3187-17075

Exc. nr.	Discovery date	Square-subsq.	Depth range Z(D)	Depth Z(datum)	UTM E (x)	UTM N (y)	Stratum	Stratig. comp. (SC)
X16	21/01/2019	A7-NW	-	5.62	283904.58	2724529.23	1606	C
Taxon code	Taxon definition	Length (mm)	Width (mm)	Thickness (mm)	Weight (g)	Raw material class		
E	Blade	25.3	14.4	4.8	2.05	NI		

Characterization. This item is a small blade or blade-like flake, with a thick uniform coating of sediment that obstructs the identification of the raw material. The proximal area is presumed at the narrower end, but the platform is missing, broken. The distal section may have been modified to obtain the angular, convergent termination, but the coating does not allow a proper



evaluation. The edges have irregular contours, but there is no clear evidence of actual use-wear or function-related modifications.

#1111. Item no. 3805-17115

Exc. nr.	Discovery date	Square-subsq.	Depth range Z(D)	Depth Z(datum)	UTM E (x)	UTM N (y)	Stratum	Stratig. comp. (SC)
X16	02/02/2019	A7-SE	-	5.54	283905.32	2724528.57	s/1606	C
Taxon code	Taxon definition	Length (mm)	Width (mm)	Thickness (mm)	Weight (g)	Raw material class		
E	Blade	57.5	18.1	11.1	12.60	V		

Characterization. This artefact is a large and heavy corner blade, probably a secondary blade, extracted from a tabular core of pale-green limestone, with localized carbonate concretions mostly on the dorsal-left side. The dorsal ridge is tall, and the original faces of the nodule seem



to have met at 90°. The right dorsal side is decorticated, with evident extraction scars, while the left one is mostly intact. The location of the platform is uncertain. The edges lack evidence of use-wear or tool functionality.

#1112. Item no. 3975-17125

Exc. nr.	Discovery date	Square-subsq.	Depth range Z(D)	Depth Z(datum)	UTM E (x)	UTM N (y)	Stratum	Stratig. comp. (SC)
X16	05/02/2019	A7-SE	-	5.46	283905.34	2724528.77	1606	C

Taxon code	Taxon definition	Length (mm)	Width (mm)	Thickness (mm)	Weight (g)	Raw material class		
E	Blade	33	15.7	10.4	5.18	V		



Characterization. This item is a secondary corner blade, extracted from a tabular core of green limestone, coated by a uniform patina of yellowish sediment all over its surfaces. The small proximal end reveals a flat triangular platform, inclined towards the ventral face, without associated impact features on the curved ventral side. The dorsal side is divided between a left flat, natural surface, and a right side and distal decorticated areas, with previous flake/blade extraction scars. The edges or the plunging distal end do not show indicators of use-wear or post-extraction modifications.

#1113. Item no. 4037-17130

Exc. nr.	Discovery date	Square-subsq.	Depth range Z(D)	Depth Z(datum)	UTM E (x)	UTM N (y)	Stratum	Stratig. comp. (SC)
X16	06/02/2019	A7-NE	-	5.39	283905.23	2724529.48	1606	C
Taxon code	Taxon definition	Length (mm)	Width (mm)	Thickness (mm)	Weight (g)	Raw material class		
E?	Blade?	39.9	14.7	9.3	4.74	V		



Characterization. This item is a secondary corner blade, with an evident ground platform on its proximal, sharper end. The intentionality behind this item is uncertain. Nevertheless, the artefact could have been used as a tool, potentially in the modality of backed knife, employing the right margin as the functional edge, a fact suggested by the presence of use-wear.



#1114. Item no. 3329-17091

Exc. nr.	Discovery date	Square-subsq.	Depth range Z(D)	Depth Z(datum)	UTM E (x)	UTM N (y)	Stratum	Stratig. comp. (SC)
X16	23/01/2019	B5-SW	-	5.80	283905.59	2724526.92	1606	C
Taxon code	Taxon definition	Length (mm)	Width (mm)	Thickness (mm)	Weight (g)	Raw material class		
E	Blade	24.5	11.4	6.2	1.55	V		



Characterization. This artefact is a curved, fragmentary, secondary corner blade. The proximal end is incomplete, and the platform is missing. The distal end is also missing, by fracture. The left dorsal side is cortical, flat. The edges show no evidence of use-wear and tool functionality.



#1115. Item no. 4246-17141

Exc. nr.	Discovery date	Square-subsq.	Depth range Z(D)	Depth Z(datum)	UTM E (x)	UTM N (y)	Stratum	Stratig. comp. (SC)
X16	14/02/2019	A6-NW	5.60/ 5.55	5.56	283904.72	2724528.09	1606/ 1609	C
Taxon code	Taxon definition	Length (mm)	Width (mm)	Thickness (mm)	Weight (g)	Raw material class		
E	Blade	22	15.7	5	1.69	V		



Characterization. This artefact is the proximal fragment of a tertiary blade, with a low dorsal ridge and a fracture plane as a distal end, with the entire surface coated by a uniform layer of yellowish cemented carbonate sediment. It has a small, punctiform, probably ground platform, associated with a marked, angular *erraillure* scar on the ventral side, and a shallow ventral bulb. The proximal-right edge is broken straight, probably as a collateral effect during impact. The edges do reveal certain degree of micro-wear, in the form of micro-notches on the concave left edge, but the thick coating obstructs the proper understanding of the potential use-wear.

#1116. Item no. 4288-17144

Exc. nr.	Discovery date	Square-subsq.	Depth range Z(D)	Depth Z(datum)	UTM E (x)	UTM N (y)	Stratum	Stratig. comp. (SC)
X16	18/02/2019	A6-SE	5.50/ 5.45	5.46	283905.47	2724527.69	1606/ 1609	C
Taxon code	Taxon definition	Length (mm)	Width (mm)	Thickness (mm)	Weight (g)	Raw material class		
E	Blade	69.8	29.3	15	37.64	V		



Characterization. This item is one of those elements that raise doubts about its human origin. It is a large and heavy corner blade, with irregular contours, bulky features, and evidently extracted by heavy impact from a tabular core of green limestone. It is possible for the element to have been produced naturally, by accidental heavy impact during rolling. Yet, the possibility

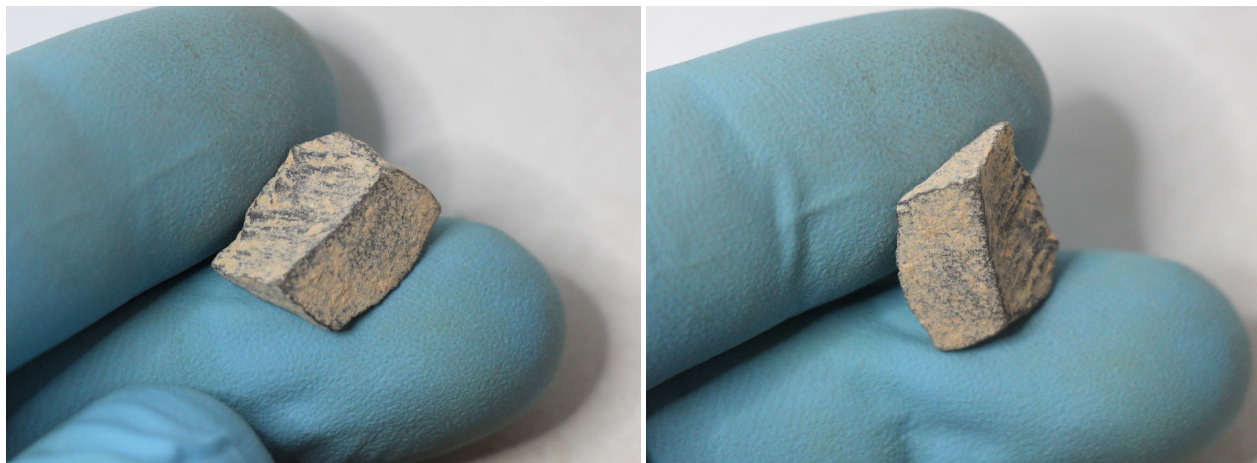
of intentionality persists, so the item was included among artefacts. However, the edges show no evidence at all supporting use-wear or post-extraction modifications.

#1117. Item no. 4294-17145

Exc. nr.	Discovery date	Square-subsq.	Depth range Z(D)	Depth Z(datum)	UTM E (x)	UTM N (y)	Stratum	Stratig. comp. (SC)
X16	19/02/2019	A6-NE	5.40/ 5.35	5.37	283905.17	2724528.09	1606/ 1609	C
Taxon code	Taxon definition	Length (mm)	Width (mm)	Thickness (mm)	Weight (g)	Raw material class		
E	Blade	13.1	11.5	3.9	0.67	V		



1 cm

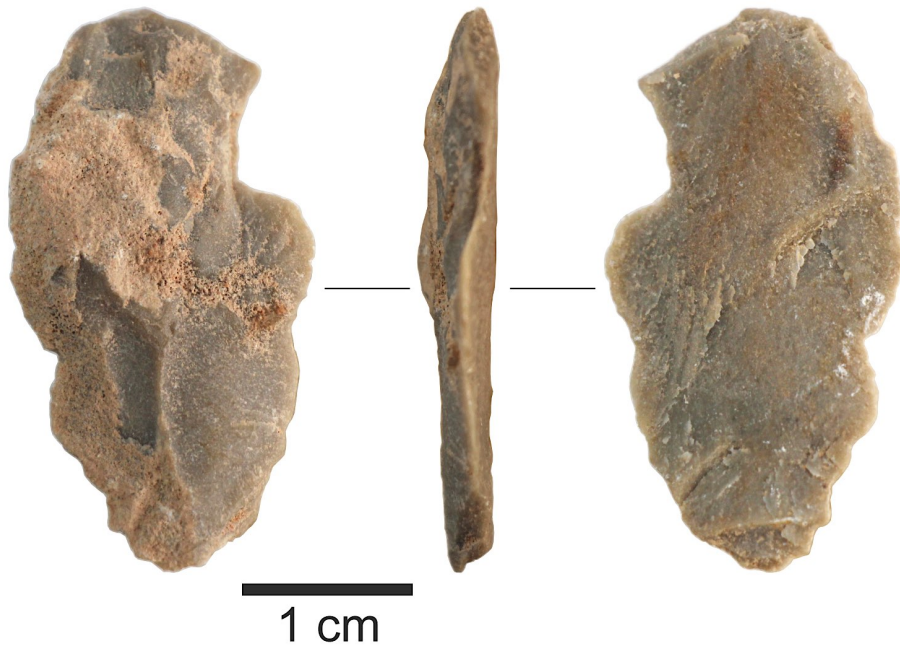


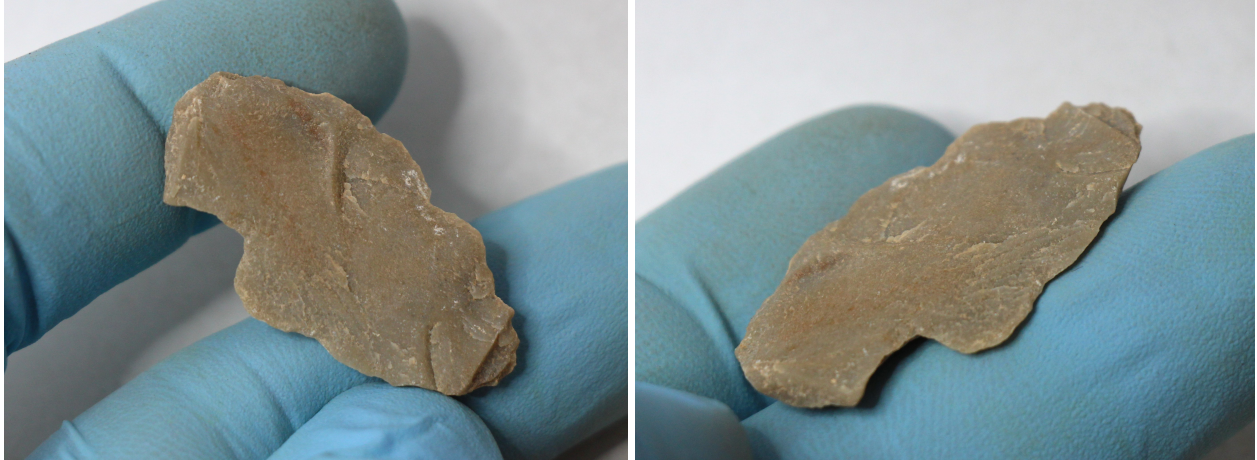
Characterization. This artefact is the medial fragment of a secondary blade of dark green limestone, with a triangular cross-section and fine, thin depositions of sediment on both sides. The ventral side is rugged, texturized. On the dorsal face, the left side seems naturally flat, while the right side is the extraction scar of a previous blade. The ends are missing, and the

location of the proximal end cannot be reconstructed. The thin edges do not have clear evidence of use-wear; yet, the piece can certainly have been conceived for a microlith use.

#1118. Item no. 4301-17015

Exc. nr.	Discovery date	Square-subsq.	Depth range Z(D)	Depth Z(datum)	UTM E (x)	UTM N (y)	Stratum	Stratig. comp. (SC)
X16	20/02/2019	A6-SW	5.45/ 5.40	5.42	283904.82	2724527.94	1609	C
Taxon code	Taxon definition	Length (mm)	Width (mm)	Thickness (mm)	Weight (g)	Raw material class		
E	Blade	33.2	17.9	3.9	2.27	V		





Characterization. This artefact is a fine, wide, thin, thinning debitage element, a secondary blade of fine-grained green limestone. The entire dorsal side is conformed by intercalating flake scars from previous extractions, and partially covered by patches of cortex and a thin cemented sediment coating. The ventral side is smooth. The platform is partly missing, as the proximal end is broken in an angular shape. Yet, the location of the platform can be easily recognized, as a white-dotted ground spot located at the intersection point between the two proximal fracture planes, and is associated with small *erraillure* scars on the ventral side and at least two overlapped, collateral extractions on the adjacent portion of the dorsal face. The distal end has a feathered termination combined with a small bending fracture visible from the ventral side. The edges are thin and sharp, but lack convincing use-wear or other evidence of post-extraction transformation. This is a fine thinning piece that proves the existence of a well-developed thinning technology during the pre-LGM times represented by layer 1609.

