

## V. Excavation X-16, stratigraphic component C (SC-C; 63 artefacts, numbers 1077–1139)

### V.1. Taxon D: Flakes in general (5 items; #1077–1081)

#### #1077. Item no. 2176-16358

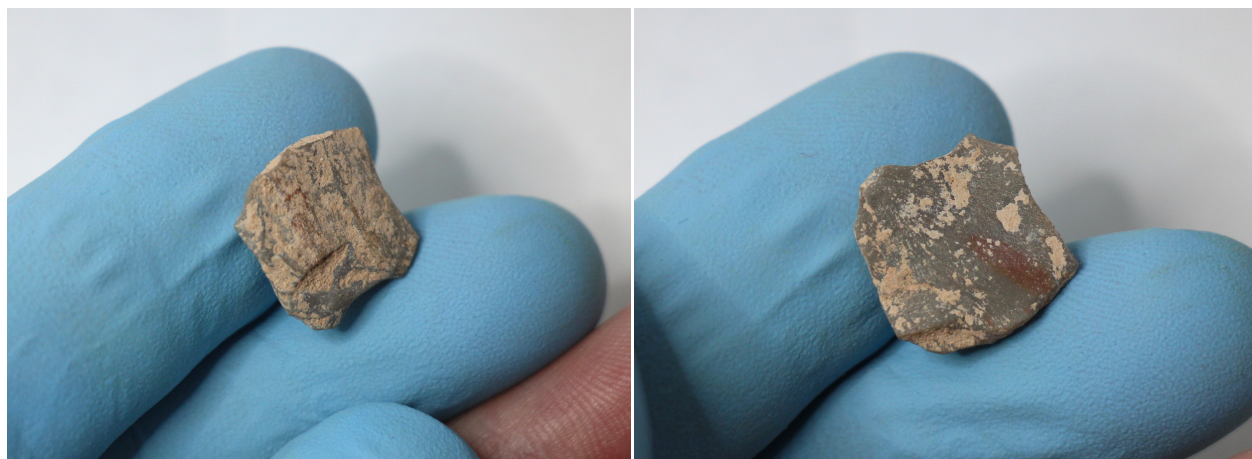
Exc. nr.	Discovery date	Square-subsq.	Depth range Z(D)	Depth Z(datum)	UTM E (x)	UTM N (y)	Stratum	Stratig. comp. (SC)
X16	07/01/2019	A2-SE	6.70/ 6.65	6.66	283905.07	2724523.94	1606	C
Taxon code	Taxon definition	Length (mm)	Width (mm)	Thickness (mm)	Weight (g)	Raw material class		
D	Flake	16.6	18.7	4.3	1.50	V		



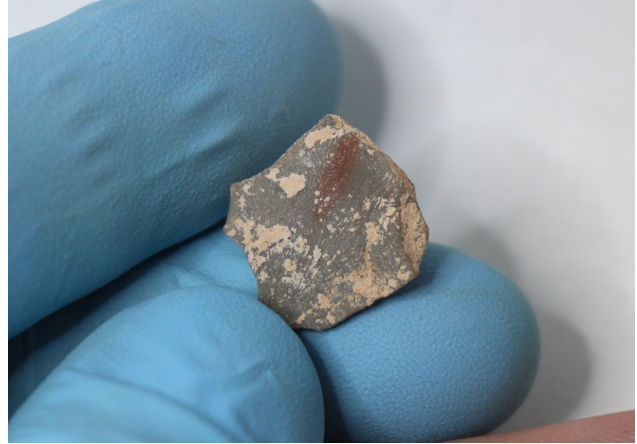
**Characterization.** This artefact is the distal fragment of a tertiary flake of green limestone, with the dorsal side almost completely covered by cemented sediment depositions that obstruct the visibility of the features. The wide proximal end is an oblique, flat fracture plane. The edges are mostly sharp. The flake could have been used as a tool, as indicated by the serrated profile of the left margin. However, the coating obstructs the proper evaluation of the indicators, for which reason the artefact has not yet been included in the “modified/used flakes” category.

**#1078. Item no. 2918-16449**

Exc. nr.	Discovery date	Square-subsq.	Depth range Z(D)	Depth Z(datum)	UTM E (x)	UTM N (y)	Stratum	Stratig. comp. (SC)
X16	17/01/2019	A2-SE	6.50/6.45	6.47	283905.37	2724523.59	1606	C
Taxon code	Taxon definition	Length (mm)	Width (mm)	Thickness (mm)	Weight (g)	Raw material class		
D	Flake	13.8	13.3	2.4	0.67	V		



**Characterization.** This artefact is a debitage element, a fragmented tertiary flake of fine-grained green limestone, with the dorsal side covered by sediment depositions, as well as part of the smooth ventral side, where a red mineral intrusion is also visible. The platform is partially missing, as the proximal edge is broken. The impact, though, was placed near the right end of the proximal section, where a part of the impact feature is preserved and confirmed by the orientation of the striations on the ventral side. The distal and left sides are also fractured, while the right edge is sharp, intact, but without evident traces of use-wear. The proximal-dorsal side reveal a small extraction scar originating in the same proximal area, likely extracted before the obtention of this flake. Despite the lack of secure evidence, the shape of the flake could be the result of post-extraction human modification.



**#1079. Item no. 3095-16488**

Exc. nr.	Discovery date	Square-subsq.	Depth range Z(D)	Depth Z(datum)	UTM E (x)	UTM N (y)	Stratum	Stratig. comp. (SC)
X16	20/01/2019	B1-NW	6.45/6.40	6.43	283905.57	2724523.09	1606	C
Taxon code	Taxon definition	Length (mm)	Width (mm)	Thickness (mm)	Weight (g)	Raw material class		
D	Flake	15	11.6	2	0.39	V		



1 cm



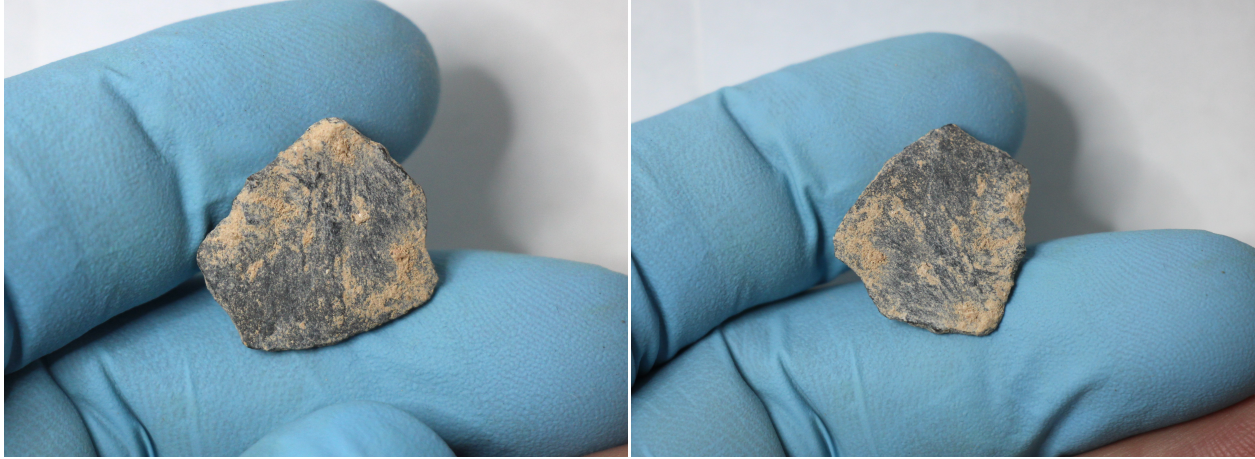
**Characterization.** This small, thin artefact is a tertiary or secondary flake of green limestone (the left dorsal side could be either patina or cortex), a thinning debitage element without evident traces of use-wear or intentional modifications on its sharp and notched edges. The platform is missing.

**#1080. Item no. 3969-16561**



Exc. nr.	Discovery date	Square-subsq.	Depth range Z(D)	Depth Z(datum)	UTM E (x)	UTM N (y)	Stratum	Stratig. comp. (SC)
X16	05/02/2019	B5-SW	-	5.73	283905.64	2724526.52	1606	C

Taxon code	Taxon definition	Length (mm)	Width (mm)	Thickness (mm)	Weight (g)	Raw material class		
D	Flake	17	17.6	2.3	0.90	V(b)		



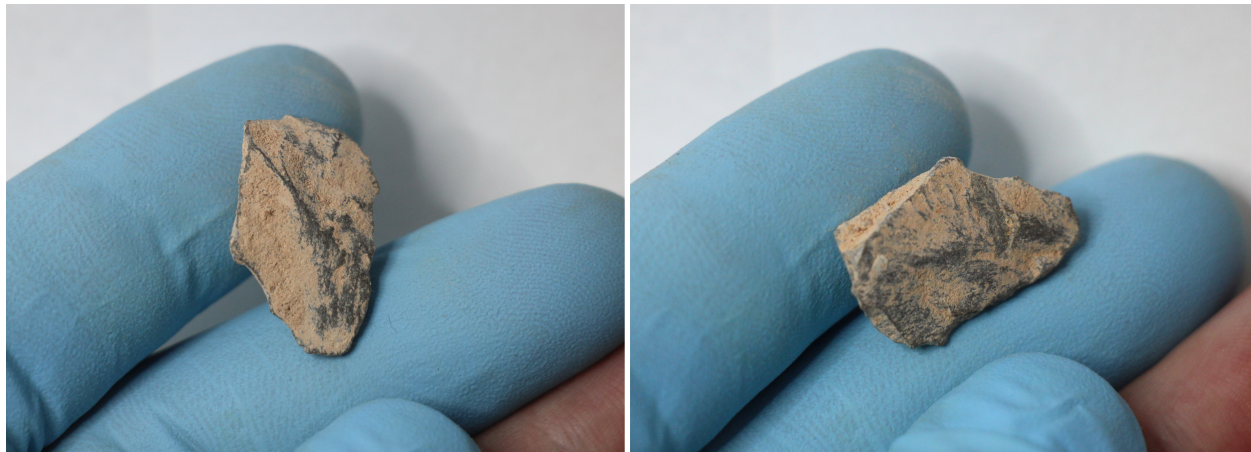
Characterization. This item is a thin, fragmented primary (cortical) flake of black limestone, with a texturized dorsal side and the ventral one marked by impact striations and localized sediment concretions. The platform is missing, removed together with most of the proximal edge, but its location can still be identified. The margins have all been fractured. However, the modifications seen on this item are rather natural in origin, probably due to the rolling of this brittle and thin item inside a gravelly context.



**#1081. Item no. 4160-16574**



Exc. nr.	Discovery date	Square-subsq.	Depth range Z(D)	Depth Z(datum)	UTM E (x)	UTM N (y)	Stratum	Stratig. comp. (SC)
X16	11/02/2019	C4-NW	5.65/ 5.60	5.63	283906.62	2724526.14	1606	C
Taxon code	Taxon definition	Length (mm)	Width (mm)	Thickness (mm)	Weight (g)	Raw material class		
D	Flake	20.3	12.5	3.7	1.04	V		



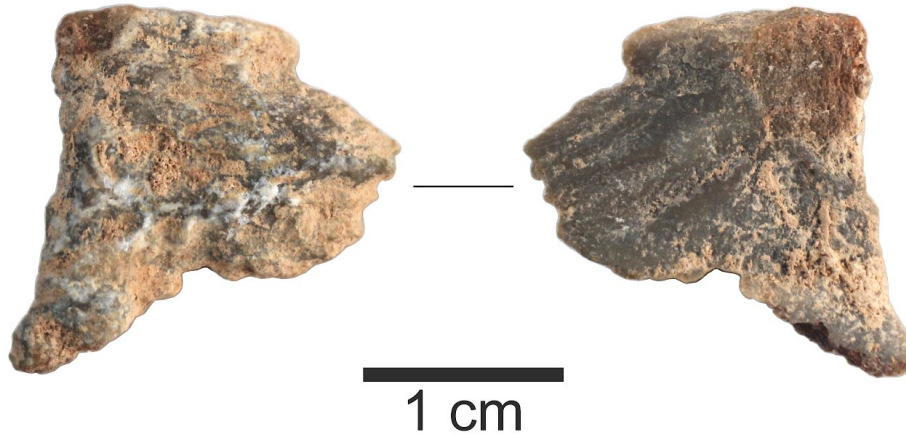
Characterization. This item is a fragmented tertiary flake of dark green limestone, with broken margins, incomplete features, and the surfaces covered by sediment depositions in different degrees. The platform is missing. The preserved edge segments do not show clear evidence of use-wear.



**V.2. Taxon Dx: Flakes with platform**  
 (7 items; #1082–1088)

**#1082. Item no. 2179-16682**

Exc. nr.	Discovery date	Square-subsq.	Depth range Z(D)	Depth Z(datum)	UTM E (x)	UTM N (y)	Stratum	Stratig. comp. (SC)
X16	07/01/2019	A2-SE	6.65/ 6.60	6.64	283905.22	2724523.89	1609	C
Taxon code	Taxon definition	Length (mm)	Width (mm)	Thickness (mm)	Weight (g)	Raw material class		
Dx	Flake	18.5	21.1	3	1.18	V		



**Characterization.** This fine example of debitage artefact is a primary (cortical) flake of green limestone, a thinning element without evidence of use-wear or tool functionality on its sharp and irregularly shaped edges. It has a long, oval, flat platform, with the ventral edge growing, at its centre, into a small impact bulb. The dorsal side is cortical, with an irregular micro-

topography infilled by scarce sediment depositions. The ventral side is curved and marked by visible impact ripples, with localized sediment coating.



**#1083. Item no. 2918-16742**

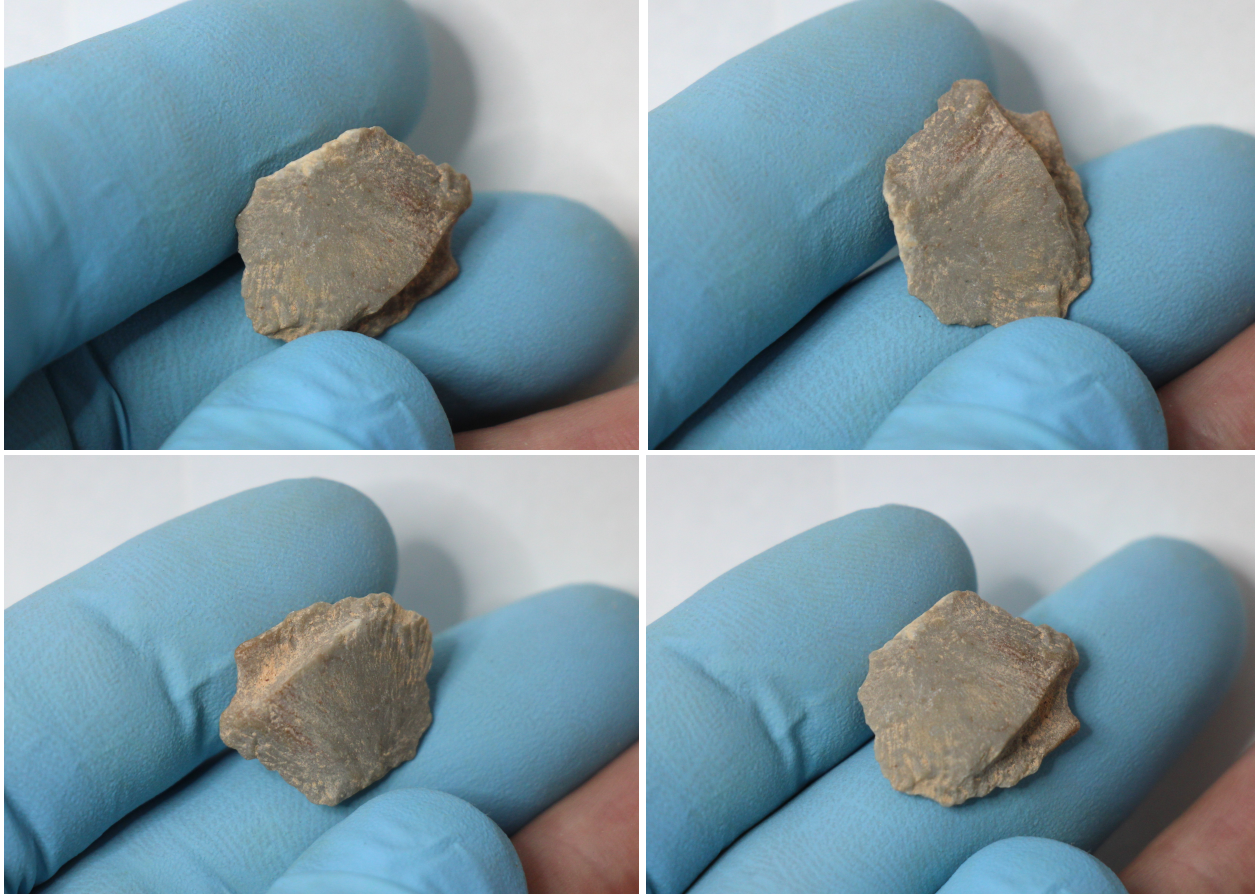
Exc. nr.	Discovery date	Square-subsq.	Depth range Z(D)	Depth Z(datum)	UTM E (x)	UTM N (y)	Stratum	Stratig. comp. (SC)
X16	17/01/2019	A2-SE	6.50/ 6.45	6.46	283905.07	2724523.64	1606	C
Taxon code	Taxon definition	Length (mm)	Width (mm)	Thickness (mm)	Weight (g)	Raw material class		
Dx	Flake	15.2	19.1	4.2	1.27	V		



**Characterization.** This artefact is a tertiary flake of green limestone, a debitage element without traces of use-wear or other indicators of post-extraction anthropic modifications, despite the very fine, thin, and apparently utilized edges. It has a non-prepared punctual platform at the centre of a thin, lineal, ground proximal edge. The white-dotted impact spot is visible only from the ventral side. Fine impact striations confirm the location of the percussion landing spot, but the







*erailure* scar and impact protuberance are missing. The distal end is defined by a pronounced step fracture plane where it separated from the parent core. It could be a bending fracture, too. The distal segment is thicker than the proximal one. The dorsal side is defined by marked impact ripples left by a previous extraction scar, infilled by fine-grained sediment depositions.

**#1084. Item no. 4244-17199**



Exc. nr.	Discovery date	Square-subsq.	Depth range Z(D)	Depth Z(datum)	UTM E (x)	UTM N (y)	Stratum	Stratig. comp. (SC)
X16	14/02/2019	A6-NW	5.55/ 5.50	5.51	283904.57	2724528.04	1606	C
Taxon code	Taxon definition	Length (mm)	Width (mm)	Thickness (mm)	Weight (g)	Raw material class		
Dx	Flake	23	19.6	4.8	1.97	V		



**Characterization.** This artefact is a thin flake of pale-green limestone, with the dorsal side completely covered by a thick cemented coating of muddy carbonate sediment. This coverage obstructs the identification of the type of flake. It has a small, oval, well-defined but not lipped, platform. No *erraillure* scar or impact protuberance appear on the ventral side. The distal end is missing, broken. The edges are sharp and thin, but lacking convincing evidence of use-wear or post-extraction modifications. The item is not a used tool, only a thinning debitage element.

**#1085. Item no. 4309-16873**



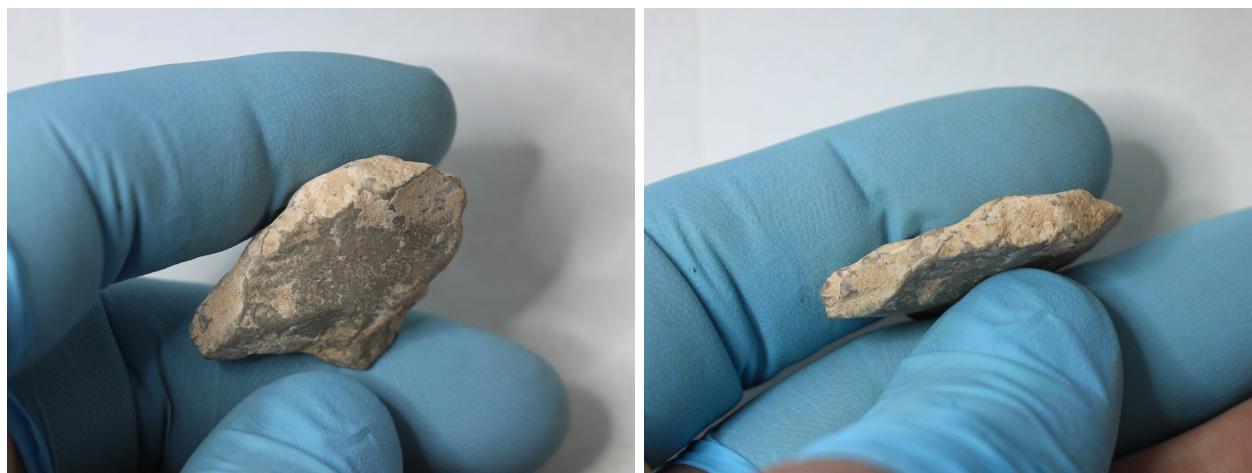
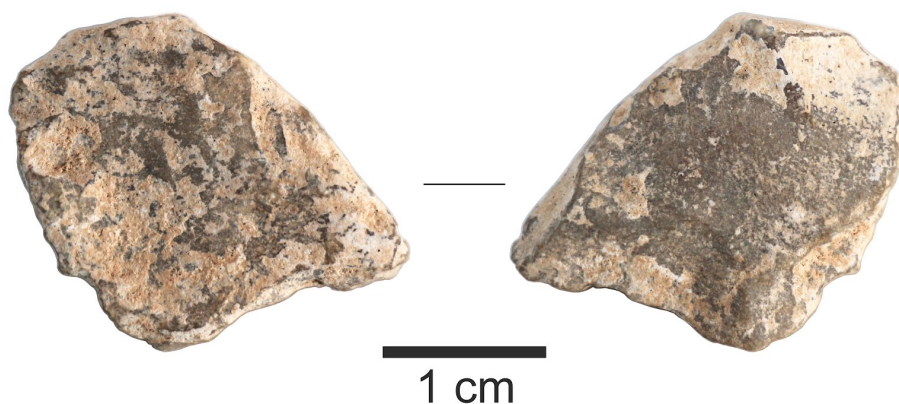
Exc. nr.	Discovery date	Square-subsq.	Depth range Z(D)	Depth Z(datum)	UTM E (x)	UTM N (y)	Stratum	Stratig. comp. (SC)
X16	15/02/2019	A6-NW	5.50/ 5.45	5.47	283904.87	2724528.14	s/1609	C
Taxon code	Taxon definition	Length (mm)	Width (mm)	Thickness (mm)	Weight (g)	Raw material class		
Dx	Flake	18.6	14.7	3.1	0.82	V		



**Characterization.** This artefact is a tertiary or secondary flake, a thinning debitage element without evidence of use-wear or tool functionality on the edges, made of a grainy variety of pale-green limestone. It has a curved, *chapeau-de-gendarme* (*chapeau-de-flic*)-type platform, with remarkable evidence of human intentionality expressed in the form of repeated impacts applied before the successful extraction, which resulted in a partial collapse of the proximal edge and in overlapped scars on the adjacent portion of the dorsal face. Remains of a shallow impact bulb are perceptible below the ventral lip of the proximal edge. The ventral face is curved and covered by localized stains of carbonate depositions. The edges of the flake are thin and sharp, without interventions, and the distal end is a feathered termination.

**#1086. Item no. 3804-16356**

Exc. nr.	Discovery date	Square-subsq.	Depth range Z(D)	Depth Z(datum)	UTM E (x)	UTM N (y)	Stratum	Stratig. comp. (SC)
X16	02/02/2019	A7-SE	-	5.57	283905.02	2724528.57	1606	C
Taxon code	Taxon definition	Length (mm)	Width (mm)	Thickness (mm)	Weight (g)	Raw material class		
Dx	Flake	23.4	20.8	5.6	3.88	V		



Characterization. This artefact is a thick tertiary flake, with irregular surfaces covered by white cemented carbonate depositions. It has a heavy, prepared, dihedral platform, slightly tilted towards the ventral side, and associated with a small, elongated impact protuberance. The flake was extracted by hard impact, which resulted in an irregular shape and strongly marked features. The right side is squarish and partly used as a platform for at least one extraction originating from the ventral side. The left side, as seen from the ventral face, has the impression of a hinge fracture where it separated from the parent core. This item is only a debitage element, without evidence of use-wear or tool functionality.

**#1087. Item no. 4260-17011**

Exc. nr.	Discovery date	Square-subsq.	Depth range Z(D)	Depth Z(datum)	UTM E (x)	UTM N (y)	Stratum	Stratig. comp. (SC)
X16	16/02/2019	A7-SW	5.40/ 5.35	5.36	283904.82	2724528.84	1606	C
Taxon code	Taxon definition	Length (mm)	Width (mm)	Thickness (mm)	Weight (g)	Raw material class		
Dx	Flake	14.2	10.9	2.8	0.46	V		



1 cm



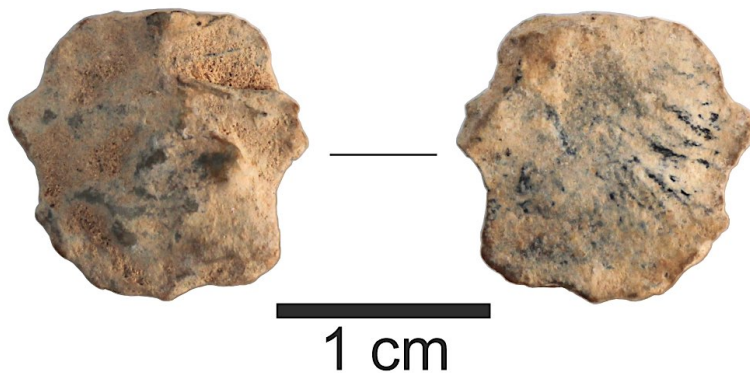
Characterization. This small, thin artefact is a thinning debitage element, a fragmentary secondary flake of green limestone, without traces of use-wear on the thin sharp edges, with a preserved platform and a missing distal end. The dorsal side is mostly cortical, with decorticated areas on the proximal-right sector, including micro-scars produced by failed

extraction attempts. The platform is small, flat, lipped. The ventral side presents thin uneven carbonate depositions. The distal segment is missing by fracture.



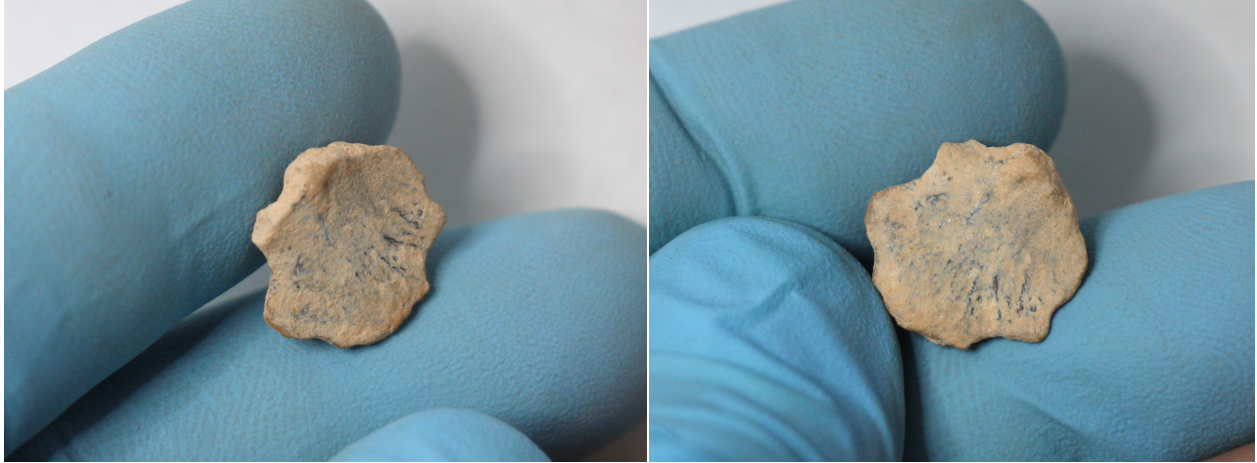
**#1088. Item no. 4270-16872**

Exc. nr.	Discovery date	Square-subsq.	Depth range Z(D)	Depth Z(datum)	UTM E (x)	UTM N (y)	Stratum	Stratig. comp. (SC)
X16	17/02/2019	A7-SW	5.40/ 5.35	5.36	283904.62	2724528.74	1606	C
Taxon code	Taxon definition	Length (mm)	Width (mm)	Thickness (mm)	Weight (g)	Raw material class		
Dx	Flake	13.7	14	3	0.57	V		



Characterization. This artefact is a small, primary (cortical) flake of green limestone, coated by a uniform layer of yellowish sediment patina that obstructs some of its features. The platform is located at the intersection of two narrow, squarish planes that conform the proximal section. The impact spot is confirmed by the impact protuberance formed on the ventral edge. The ventral side is slightly curved and presents impact striations radiating away





from the platform. The edges are serrated (although smoothed by erosion), but most likely due to natural processes. No use-wear traces or intentional transformations are present on the artefact.



### V.3. Taxon Dt: Transversal flakes (3 items; #1089–1091)

#### #1089. Item no. 2918-16327

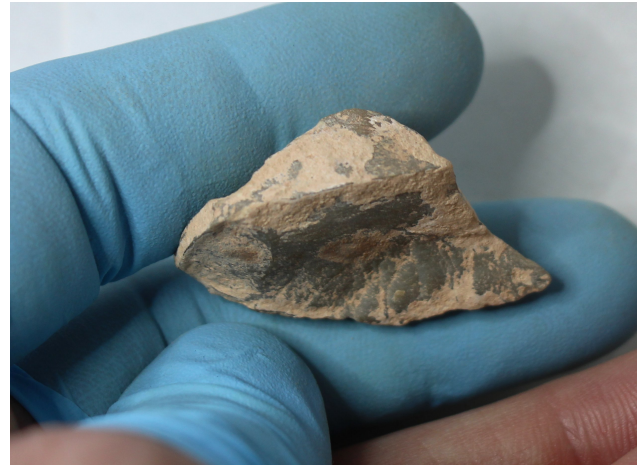
Exc. nr.	Discovery date	Square-subsq.	Depth range Z(D)	Depth Z(datum)	UTM E (x)	UTM N (y)	Stratum	Stratig. comp. (SC)
X16	17/01/2019	A2-SE	6.50/ 6.45	6.47	283905.17	2724523.79	1606	C
Taxon code	Taxon definition	Length (mm)	Width (mm)	Thickness (mm)	Weight (g)	Raw material class		
Dt	Transversal flake	22	34.3	9.9	8.06	V		



Characterization. This artefact is a thick, robust, and coarse *outrépassé* tertiary transversal flake of fine-grained green limestone, probably the result of breaking in half of a reduced core. It has a wide, thick, flat platform, not lipped and without *erailure* scar or impact bulb on the ventral side. The right end of the platform is the origin of another extraction visible along the right side of the dorsal face. Localized sediment concretions infill the surface features on both sides. The left, distal, peak-like feature is entirely a natural occurrence, not the result of human

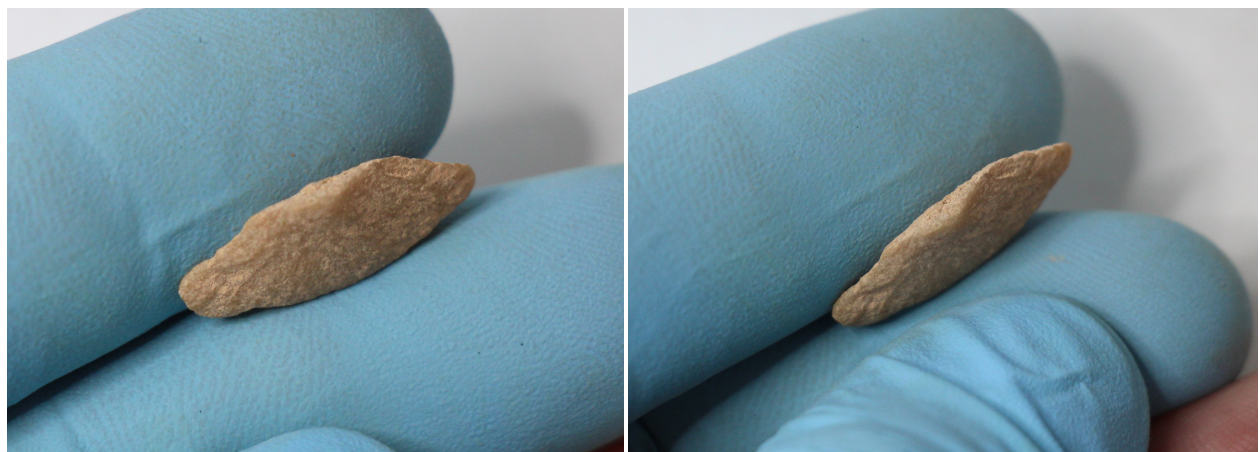
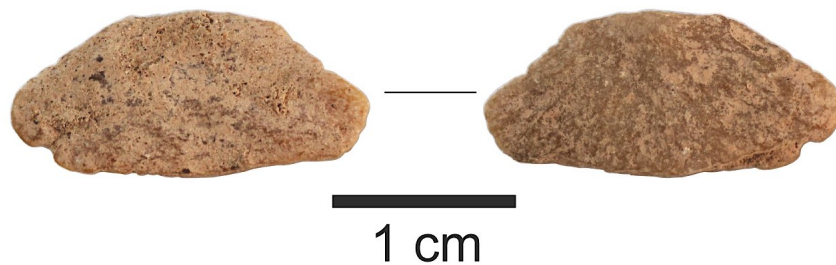


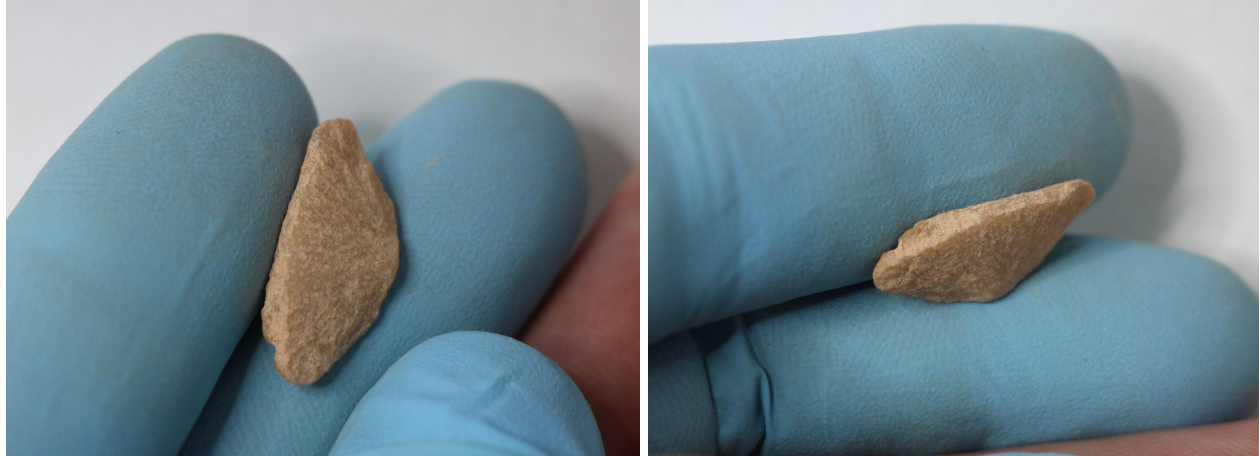
retouch. The distal edge is robust, removed from the surface of the parent core, and it contains the scars of at least three adjacent flake and blade-like extractions. The artefact was not used as a tool, as it lacks any evidence of use-wear or post-extraction anthropic modifications.



**#1090. Item no. 2990-16628**

Exc. nr.	Discovery date	Square-subsq.	Depth range Z(D)	Depth Z(datum)	UTM E (x)	UTM N (y)	Stratum	Stratig. comp. (SC)
X16	20/01/2019	A3-SW	6.55/6.50	6.51	283904.57	2724524.94	1606	C
Taxon code	Taxon definition	Length (mm)	Width (mm)	Thickness (mm)	Weight (g)	Raw material class		
Dt	Transversal flake	9.2	19.8	3	0.63	V(g)		

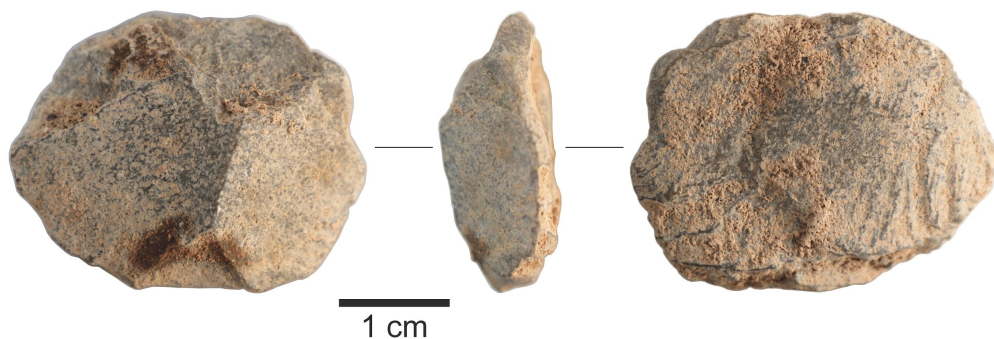




**Characterization.** This artefact is a wide and short, laterally symmetrical, primary (cortical) transversal flake of a golden yellow variety of limestone, a debitage element without traces of use-wear on the edges. It has a small, punctiform platform at the centre of the narrow proximal edge, with a marked impact protuberance attached to its ventral edge. The convex distal margin shows the separation plane from the parent core, in the form of a hinge fracture.

**#1091. Item no. 4022-16357**

Exc. nr.	Discovery date	Square-subsq.	Depth range Z(D)	Depth Z(datum)	UTM E (x)	UTM N (y)	Stratum	Stratig. comp. (SC)
X16	06/02/2019	B5-NW	-	5.69	283905.69	2724527.28	1606	C
Taxon code	Taxon definition	Length (mm)	Width (mm)	Thickness (mm)	Weight (g)	Raw material class		
Dt	Transversal flake	25.5	33	10.3	9.52	V		



**Characterization.** This thick, oval artefact of green limestone, despite its shape looking like a lenticular core, is in fact a transversal flake extracted by repeated hard impacts from a nodule that had a shape between ovoid and tabular, considering that the two large surfaces on the dorsal side are natural flat planes, as they were on the parent core. The proximal segment of

the dorsal side shows a triangular flake extraction scar that was produced as part of the first flaking attempts. The platform is partly collapsed, displaced to the centre-right, while the left end of the impact area shows the typical scars produced by repeated blows on the same spot. On the ventral side, there is no *erraillure* scar or lip (as the extraction was seemingly achieved with the use of a hard hammer), but a relatively large impact bulb. The edges of the item form an almost continuous oval contour, but they lack any evidence of use-wear or post-extraction anthropic modifications.

