

IV.5. Taxon Dt: Transversal flakes
 (10 items; #1005–1014)

#1005. Item no. 425-10967

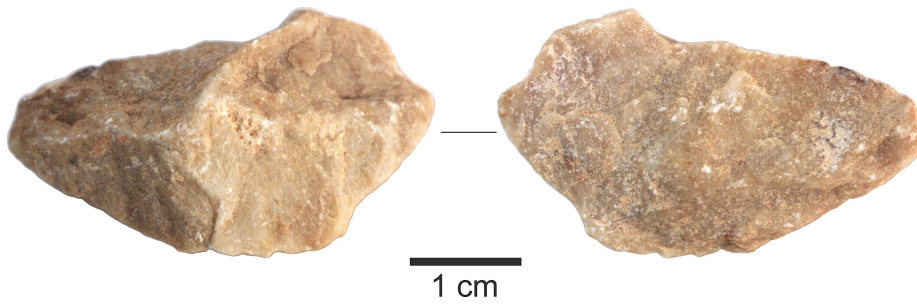
Exc. nr.	Discovery date	Square -subsq.	Depth range Z(D)	Depth Z(datum)	UTM E (x)	UTM N (y)	Stratum	Stratig. comp. (SC)
X12	31/01/2016	i4	-0.98/ -1.08	-1.05	283921.06	2724532.87	1212	C
Taxon code	Taxon definition	Length (mm)	Width (mm)	Thickness (mm)	Weight (g)	Raw material class		
Dt	Transversal flake	14.8	20.6	6	1.59	V		



Characterization. This small item is a secondary transversal flake of dark-green limestone, without indicators of use-wear or other post-extraction modifications, for which reason the item only qualifies as a debitage element. The flake has a small punctiform platform at the peak of the proximal section, white-dotted and partially collapsed, without related impact features on the ventral side. The dorsal side is tall, with a transversal ridge and a cortical left side.

#1006. Item no. 471-11066

Exc. nr.	Discovery date	Square-subsq.	Depth range Z(D)	Depth Z(datum)	UTM E (x)	UTM N (y)	Stratum	Stratig. comp. (SC)
X12	02/02/2016	i5	-1.50/-1.55	-1.53	283921.01	2724533.82	1212	C
Taxon code	Taxon definition	Length (mm)	Width (mm)	Thickness (mm)	Weight (g)	Raw material class		
Dt	Transversal flake	22.5	34	10.2	5.51	V(g)		



Characterization. This item is a thick, robust, secondary transversal flake, made of the grainy golden-colored limestone variety, with a well-defined morphology, and extracted from a non-tabular nodule. The platform stands out from the proximal section; it is partly collapsed, without lip, and without associated *erailure* scar or impact bulb on the ventral face. The extractions on the dorsal side probably belong to flaking made before the removal of the flake. Certain



micro-wear traces are visible on the right-distal edge, but the patterns may indicate rather natural causes. The overall shape suggests a transversal point, but the piece lacks evidence of having been modified for that function.

#1007. Item no. 2008-12738

Exc. nr.	Discovery date	Square-subsq.	Depth range Z(D)	Depth Z(datum)	UTM E (x)	UTM N (y)	Stratum	Stratig. comp. (SC)
X12	24/01/2017	M4-SE	-2.60/-2.70	-2.67	283925.39	2724532.68	1212	C
Taxon code	Taxon definition	Length (mm)	Width (mm)	Thickness (mm)	Weight (g)	Raw material class		
Dt	Transversal flake	14.6	23	5.9	1.66	V		



Characterization. This small item is a secondary transversal flake of green limestone, with a thick, wide cortical platform. Both faces are decorticated and of similar aspect, but the ventral side can be identified by the edge of the platform that leans over the adjacent surface. The edges of the flake lack any evidence of use-wear, meaning this piece is only a debitage element.



#1008. Item no. 2017-12742

Exc. nr.	Discovery date	Square-subsq.	Depth range Z(D)	Depth Z(datum)	UTM E (x)	UTM N (y)	Stratum	Stratig. comp. (SC)
X12	25/01/2017	M5-NE	-2.60/-2.70	-2.64	283925.44	2724534.33	1212	C

Taxon code	Taxon definition	Length (mm)	Width (mm)	Thickness (mm)	Weight (g)	Raw material class		
Dt	Transversal flake	21.7	28.7	6.6	3.2	V		

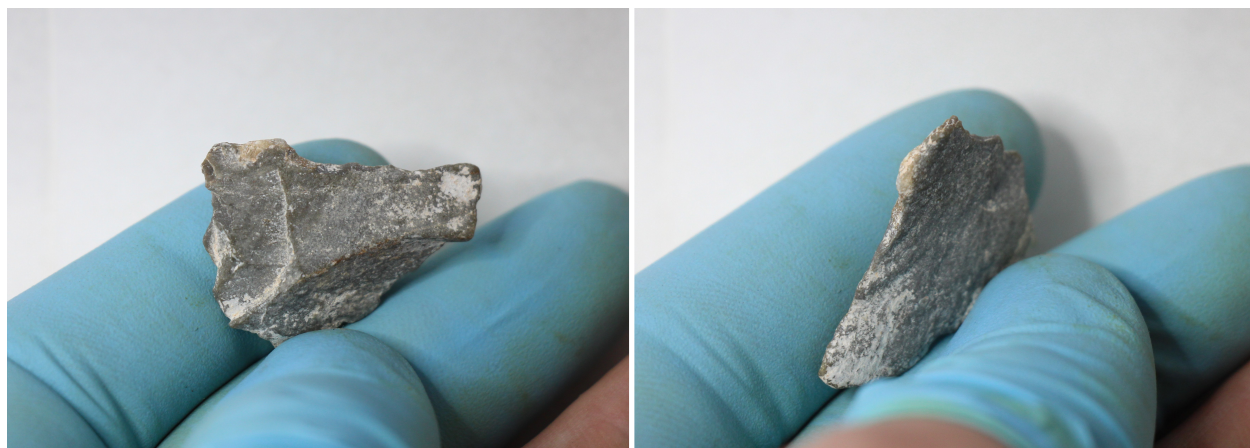
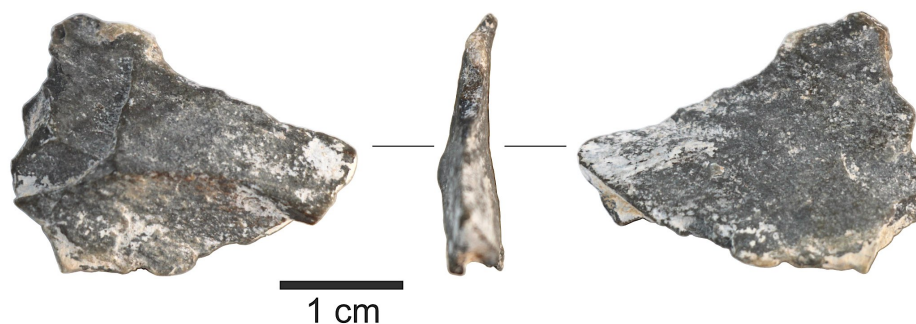


Characterization. This artefact is a tertiary transversal flake of a dark-green limestone. The platform is ground, white-marked, partly collapsed under impact, associated with a small *erraillure* scar on the ventral side, and with a slightly convex ventral face as a particular form of impact bulb. The same platform had been impacted before the successful extraction, achieving the removal of a blade-like flake from the parent core, visible as a scar on the dorsal side of the flake. The edges of the transversal flake lack use-wear or other post-extraction modifications, for which it qualifies only as a debitage element.

#1009. Item no. 2032-12746

Exc. nr.	Discovery date	Square-subsq.	Depth range Z(D)	Depth Z(datum)	UTM E (x)	UTM N (y)	Stratum	Stratig. comp. (SC)
X12	25/01/2017	M6-NW	-2.60/ -2.70	-2.66	283924.64	2724535.43	1212	C

Taxon code	Taxon definition	Length (mm)	Width (mm)	Thickness (mm)	Weight (g)	Raw material class		
Dt	Transversal flake	21.3	28	5.1	2.52	V		



Characterization. This item is a tertiary transversal flake of light-green limestone, covered by uneven deposits of white carbonates. The platform's location is evident, but the platform itself is missing, and the edges seem to present certain degree of damage or modifications, but the post-extraction anthropic intervention is not sufficiently supported.

#1010. Item no. 2064-13230

Exc. nr.	Discovery date	Square-subsq.	Depth range Z(D)	Depth Z(datum)	UTM E (x)	UTM N (y)	Stratum	Stratig. comp. (SC)
X12	25/01/2017	M6-SW	-2.70/ -2.80	-2.75	283924.84	2724534.83	1212	C
Taxon code	Taxon definition	Length (mm)	Width (mm)	Thickness (mm)	Weight (g)	Raw material class		
Dt	Transversal flake	26.8	38	6	6.83	V		



Characterization. This artefact is a transversal flake of fine-grained green limestone, probably primary (cortical), but with the dorsal side combining cortex with a thick coating of orange fine carbonate sediment patina. The flake has a very thin, punctiform platform, with an associated *erailure* scar and a shallow impact convexity on the ventral side. Overlapped thin flake removals on the proximal sector of the dorsal face suggest previous extraction attempts. The flake shows no evidence of use-wear or other post-extraction anthropic modifications.

#1011. Item no. 2113-12758



Exc. nr.	Discovery date	Square-subsq.	Depth range Z(D)	Depth Z(datum)	UTM E (x)	UTM N (y)	Stratum	Stratig. comp. (SC)
X12	26/01/2017	M7-SW	-2.80/ -2.90	-2.84	283924.84	2724535.73	1218	C
Taxon code	Taxon definition	Length (mm)	Width (mm)	Thickness (mm)	Weight (g)	Raw material class		
Dt	Transversal flake	19.9	32.6	9	4.99	V		



Characterization. This artefact is a secondary transversal flake with a tall dorsal side, extracted from a non-tabular core of gray-green limestone. It has a well-defined faceted platform, which is lipped and strongly inclined towards the ventral side. The proximal-left section of the dorsal side shows the deep and overlapped scars derived from previous failed extraction attempts. The right segment of the distal edge seems to have been modified, as it is evenly convex and presents certain degree of use-wear. However, the edge traces are weak, and the origin could have been natural, by rolling inside the matrix of its gravelly stratum.

#1012. Item no. 2143-12764



Exc. nr.	Discovery date	Square-subsq.	Depth range Z(D)	Depth Z(datum)	UTM E (x)	UTM N (y)	Stratum	Stratig. comp. (SC)
X12	27/01/2017	M7-SE	-2.90/ -3.00	-2.98	283925.34	2724535.83	1218	C
Taxon code	Taxon definition	Length (mm)	Width (mm)	Thickness (mm)	Weight (g)	Raw material class		
Dt	Transversal flake	23.3	29	7.3	5.27	V		



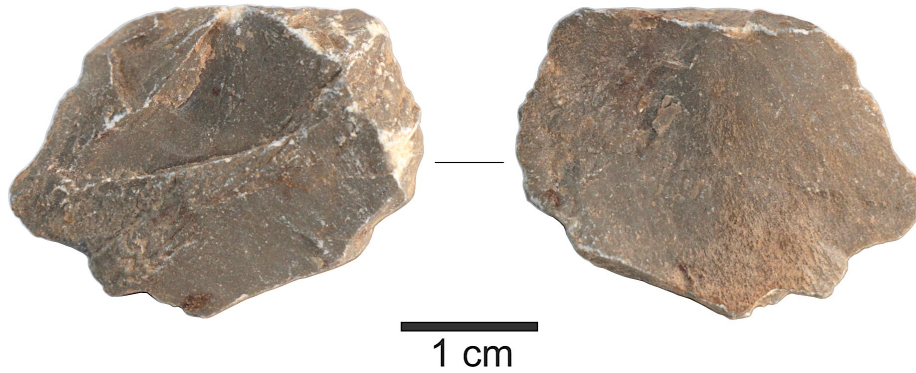
Characterization. This item is a secondary transversal flake of gray-green limestone, extracted from a nodular (or ovoid) core. The platform (here on the upper edge) is large and flat; the impact point is visible on its upper surface, but not on the ventral edge, and the ventral side lacks associated impact features, being almost completely flat. It indicates a strong impact. The differences in color suggest the retouch-like modifications visible on the distal edge are actually recent, and probably of natural origin.



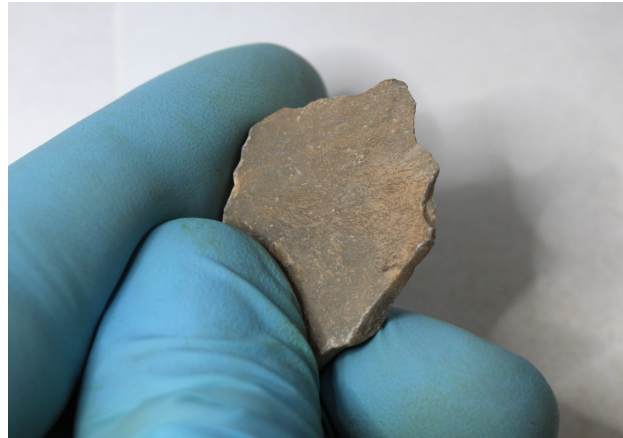
#1013. Item no. 2153-13244

Exc. nr.	Discovery date	Square-subsq.	Depth range Z(D)	Depth Z(datum)	UTM E (x)	UTM N (y)	Stratum	Stratig. comp. (SC)
X12	27/01/2017	M5-NE	-3.00/ -3.10	-3.08	283925.14	2724534.43	1218	C

Taxon code	Taxon definition	Length (mm)	Width (mm)	Thickness (mm)	Weight (g)	Raw material class		
Dt	Transversal flake	22.7	30.6	5.4	4.06	V		



Characterization. This artefact is a transversal flake of green limestone, without apparent anthropic modifications after its extraction from the parent core. The proximal edge is a long and wide square edge separated from the original nodule, with the white-dotted impact spot visible on the ventral edge, associated with a very small *erailure* scar, and a shallow impact convexity on the ventral side. The same proximal edge had been utilized to extract a previous, smaller transversal flake from the dorsal side; the scar and the white impact location for this extraction are easily visible from the dorsal face.



#1014. Item no. 570-10057

Exc. nr.	Discovery date	Square-subsq.	Depth range Z(D)	Depth Z(datum)	UTM E (x)	UTM N (y)	Stratum	Stratig. comp. (SC)
X12	06/02/2016	i5-E/ J5	-	-2.55	283921.54	2724533.98	1223	C
Taxon code	Taxon definition	Length (mm)	Width (mm)	Thickness (mm)	Weight (g)	Raw material class		
Dt	Transversal flake	13.7	23.5	3.6	0.99	V		



Characterization. This small artefact is an unmodified, tertiary transversal flake found spatially associated with the “Holen point” (see below, artefact #1069.570-10056) and thought, at first, to had separated from the bifacial preform as a by-product of its thinning process. Yet, this cannot be confirmed, as the two items could not be perfectly refitted together. The flake has a well-marked, lipped platform, possibly related to the usage of a soft hammer, strongly inclined towards the ventral side. The dorsal face of the flake contains the flake



scar of a previous extraction originated on the same proximal edge, and almost on the same platform. There is no use-wear or other modifications visible on this debitage item.

