

IV.4. Taxon Dx: Flakes with platforms
 (18 items; #987-1004)

#987. Item no. 357-10673

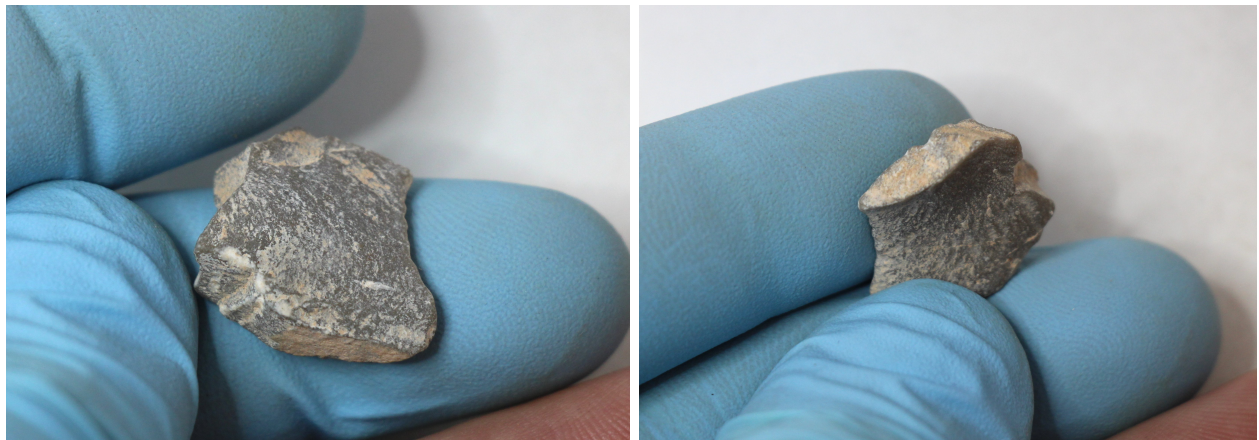
Exc. nr.	Discovery date	Square-subsq.	Depth range Z(D)	Depth Z(datum)	UTM E (x)	UTM N (y)	Stratum	Stratig. comp. (SC)
X12	29/01/2016	M6	-2.20/ -2.40	-2.30	283924.74	2724535.13	1212	C
Taxon code	Taxon definition	Length (mm)	Width (mm)	Thickness (mm)	Weight (g)	Raw material class		
Dx	Flake	30.2	17.7	5.6	2.57	V		



Characterization. This artefact is a secondary flake with the shape of an inverted triangle, with a feathered distal termination, and coated by fine depositions of yellow-brown sediment, consistent with the context of discovery. It has a flat, non-lipped platform, associated with a short and wide *erailleure* scar under its ventral edge. The flake separated smoothly from the parent core of green limestone, presenting thin, sharp edges. The flake separated smoothly from the parent core of green limestone, presenting thin, sharp edges. The edges lack evidence of use-wear or further post-extraction modifications.

#988. Item no. 425-10968

Exc. nr.	Discovery date	Square-subsq.	Depth range Z(D)	Depth Z(datum)	UTM E (x)	UTM N (y)	Stratum	Stratig. comp. (SC)
X12	31/01/2016	i4	-0.98/ -1.08	-1.04	283920.96	2724533.27	1212	C
Taxon code	Taxon definition	Length (mm)	Width (mm)	Thickness (mm)	Weight (g)	Raw material class		
Dx	Flake	14.9	17.5	5.1	1.62	V		



Characterization. This item is a small, secondary, short, *outrépassé* flake, extracted from a narrow tabular core of dark-green limestone. The ventral side is concave, the dorsal is almost flat. The platform is heavy, cortical, strongly leaning towards the ventral face, with a lipped ventral edge. Repeated percussion impacts produced micro-scars on the proximal sector of the dorsal face, under the platform. The piece lacks use-wear or post-extraction modifications.

#989. Item no. 425-10970

Exc. nr.	Discovery date	Square-subsq.	Depth range Z(D)	Depth Z(datum)	UTM E (x)	UTM N (y)	Stratum	Stratig. comp. (SC)
X12	31/01/2016	i4	-0.98/-1.08	-1.04	283921.11	2724532.92	1212	C
Taxon code	Taxon definition	Length (mm)	Width (mm)	Thickness (mm)	Weight (g)	Raw material class		
Dx	Flake	26.1	31.4	6.7	6.79	V		



Characterization. This squarish artefact is a primary (cortical) flake of pale-green limestone with a very clear extraction morphology. The white-dotted platform is heavily ground, located at the right end of a narrow, flat proximal edge. Before the successful extraction of this flake, the same platform received previous blows that only managed to remove a couple of flakes from

the proximal-dorsal side, as part of a succession of failed attempts. The flake presents a very small *erraillure* scar below the ventral edge of the platform, as well as a cone-shaped impact bulb and fine impact striations. The edges of the flake lack use-wear or other post-extraction transformations.

#990. Item no. 2014-12740

Exc. nr.	Discovery date	Square-subsq.	Depth range Z(D)	Depth Z(datum)	UTM E (x)	UTM N (y)	Stratum	Stratig. comp. (SC)
X12	25/01/2017	L4-SE	-2.70/-2.80	-2.75	283924.36	2724532.71	1212	C
Taxon code	Taxon definition	Length (mm)	Width (mm)	Thickness (mm)	Weight (g)	Raw material class		
Dx	Flake	31.2	32.5	9.1	9.76	V		

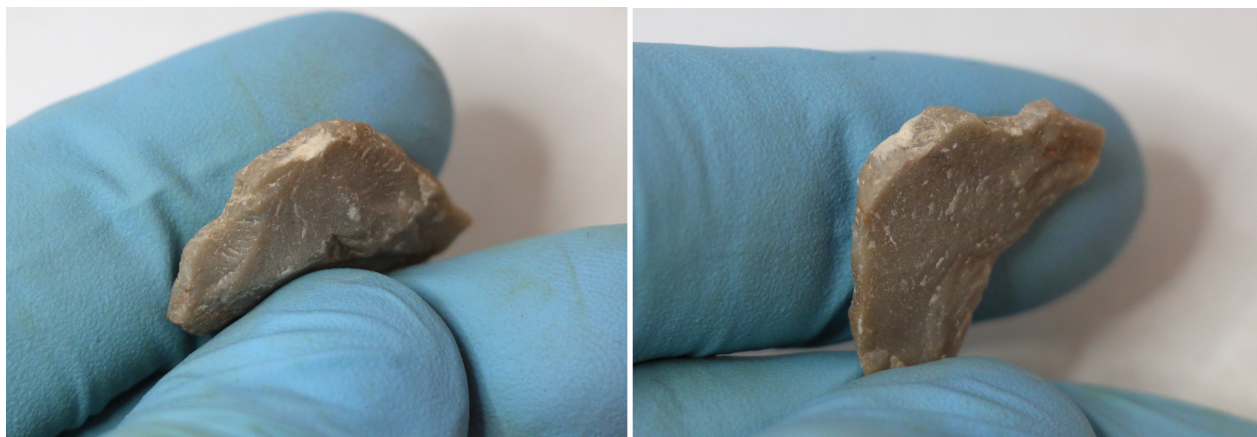


Characterization. This artefact is a heavy, thick flake of pale-green limestone, coated by thick white carbonate concretions on most of its surface. It has a large, heavy, isolated platform at its pointy end, with an associated *erraillure* scar on the ventral side. The sharp distal edge may

present indicators of use as a tool, in the form of fine micro-notches and a serrated profile, but the carbonate coating and the presence of recent damage alter the clarity of the evidence.

#991. Item no. 2017-12743

Exc. nr.	Discovery date	Square-subsq.	Depth range Z(D)	Depth Z(datum)	UTM E (x)	UTM N (y)	Stratum	Stratig. comp. (SC)
X12	25/01/2017	M5-NE	-2.60/-2.70	-2.66	283925.24	2724534.23	1212	C
Taxon code	Taxon definition	Length (mm)	Width (mm)	Thickness (mm)	Weight (g)	Raw material class		
Dx	Flake	15.5	23	3.5	1.18	V		



Characterization. This artefact is a tertiary flake of an irregular shape and made of green limestone, with a thin, angular distal edge, and squarish lateral edges. The proximal end is squarish as well, with the impact spot identified as a white-dotted mark at the centre, without associated impact features on the ventral side, such as *erailure* scar or impact bulb. This is only a debitage element, without further modifications or use-wear.

#992. Item no. 2042-12747

Exc. nr.	Discovery date	Square-subsq.	Depth range Z(D)	Depth Z(datum)	UTM E (x)	UTM N (y)	Stratum	Stratig. comp. (SC)
X12	25/01/2017	M4-NE	-2.70/-2.80	-2.77	283925.19	2724533.18	1212	C
Taxon code	Taxon definition	Length (mm)	Width (mm)	Thickness (mm)	Weight (g)	Raw material class		
Dx	Flake	21	23.3	7.3	3.93	V		



Characterization. This artefact is a thick *outrépassé* flake of pale-green limestone, extracted from a tabular core, with a square distal surface containing cortex, and with the dorsal surface largely covered by white carbonate depositions. The platform is broken. The edges lack evidence of use-wear or other post-extraction modifications.



#993. Item no. 2148-12769

Exc. nr.	Discovery date	Square-subsq.	Depth range Z(D)	Depth Z(datum)	UTM E (x)	UTM N (y)	Stratum	Stratig. comp. (SC)
X12	27/01/2017	M5-SE	-3.00/-3.10	-3.03	283925.14	2724533.63	1212	C
Taxon code	Taxon definition	Length (mm)	Width (mm)	Thickness (mm)	Weight (g)	Raw material class		
Dx	Flake	30	32.5	6.4	6.27	V		



Characterization. This artefact is a tertiary flake of green limestone, with fine-grained yellowish sediment depositions on its surface, and a thicker coating over the ventral side. The contour of the flake is irregular, somehow star-shaped. The peak-like portion that stands out as a triangular appendix (here, upwards) is the distal end. It has an oval flat platform located at the right end of the squarish proximal edge, associated with an *erailure* scar visible on the ventral side. The artefact lacks evidence of use-wear or post-extraction modifications on its edges, remaining as a debitage element only.



#994. Item no. 2093-12754



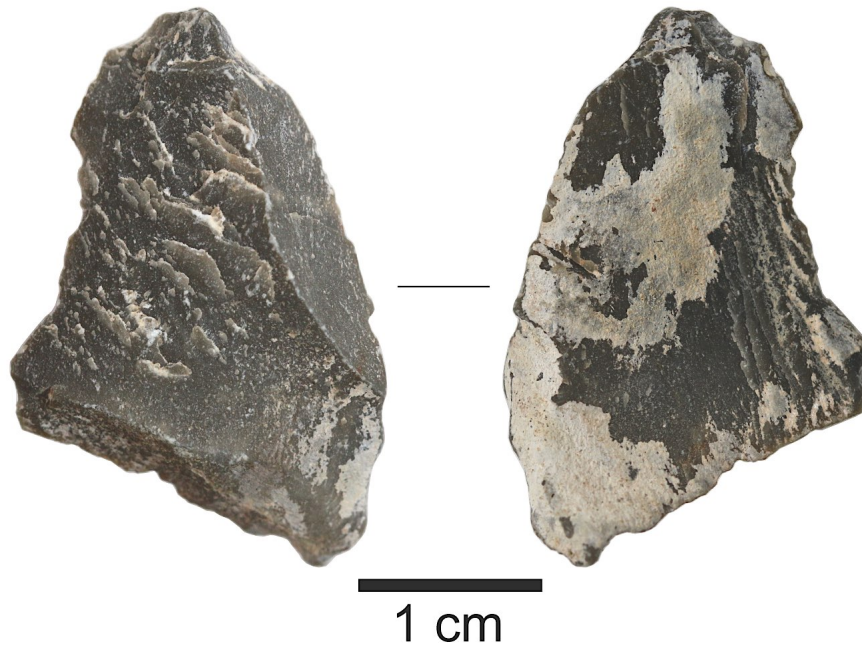
Exc. nr.	Discovery date	Square-subsq.	Depth range Z(D)	Depth Z(datum)	UTM E (x)	UTM N (y)	Stratum	Stratig. comp. (SC)
X12	26/01/2017	L6-NE	-2.80/-2.90	-2.85	283924.36	2724535.31	1218	C
Taxon code	Taxon definition	Length (mm)	Width (mm)	Thickness (mm)	Weight (g)	Raw material class		

Dx	Flake	21	25.2	5.5	3.28	V		
----	-------	----	------	-----	------	---	--	--



Characterization. This item is a debitage piece, a thick flake of pale-green limestone without clear indications of use-wear on its edges; yet, with shape and morphology suitable for the functionality of a cutting tool. The proximal section is thick, with a cortical proximal edge. The platform itself is protuberant, thick, ground, situated at the intersection of two natural planes, leaning strongly over the ventral side. Next to it, the contour of an impact bulb is well-marked. The dorsal side is rather flat, revealing a small previous extraction on it.

#995. Item no. 2148-12768



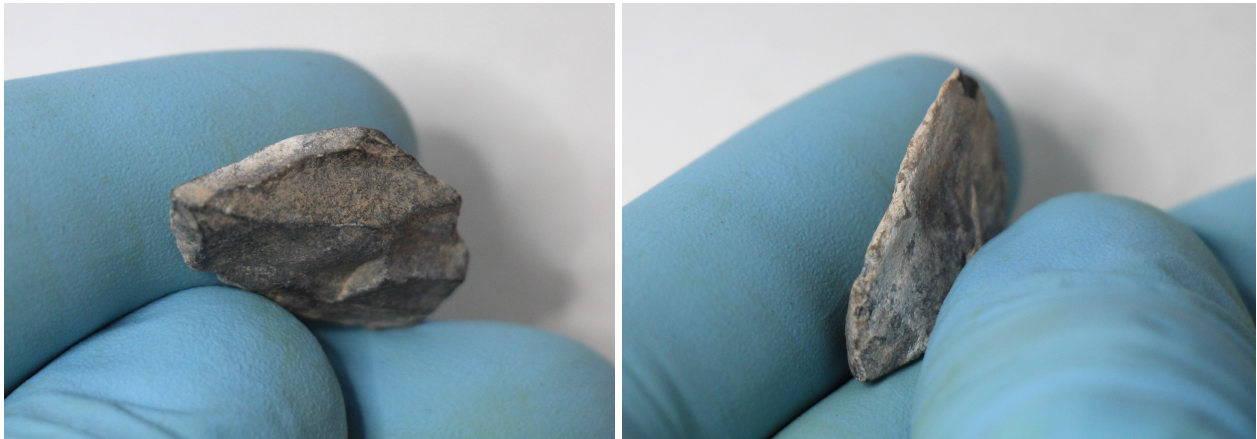
Exc. nr.	Discovery date	Square-subsq.	Depth range Z(D)	Depth Z(datum)	UTM E (x)	UTM N (y)	Stratum	Stratig. comp. (SC)
X12	27/01/2017	M5-SE	-3.00/-3.10	-3.07	283925.34	2724533.63	1218	C
Taxon code	Taxon definition	Length (mm)	Width (mm)	Thickness (mm)	Weight (g)	Raw material class		
Dx, F	Flake, used?	29	20	4.6	2.35	V		



Characterization. This artefact is a thin, finely-made, *outrépassé* secondary flake that may have been used as a cutting tool or an endscraper. It is made of a dark-green limestone with white carbonate concretions occupying most of the curved ventral side. It has a small, evidently isolated platform on the pointy end, with an *erailure* scar and a small impact protuberance on the corresponding part of the ventral side. The right edge contains a flat surface from the parent core. The dorsal surface is occupied by a previous flake extraction originating in the distal-right sector of the flake. The concave left edge of the piece is naturally sharp. The distal end includes a cortical fragment of the parent nodule, in the form of a squarish, beveled edge. This is the edge that may have been utilized for cutting or scrapping, as some irregular use-wear suggests. However, the artificiality of the marks requires more in-depth assessment.

#996. Item no. 2148-12770

Exc. nr.	Discovery date	Square-subsq.	Depth range Z(D)	Depth Z(datum)	UTM E (x)	UTM N (y)	Stratum	Stratig. comp. (SC)
X12	27/01/2017	M5-SE	-3.00/-3.10	-3.05	283925.14	2724533.83	1218	C
Taxon code	Taxon definition	Length (mm)	Width (mm)	Thickness (mm)	Weight (g)	Raw material class		
Dx	Flake	15.6	18.7	3.7	1.12	V(b)		



Characterization. This artefact is a black limestone tertiary flake, with white carbonate concretions on the ventral side. The proximal edge is narrow and square, part of an edge of the parent core. The impact point of the platform is located at the right end of this edge, where it forms an angle with the descending right edge. The small impact spot is associated with an *erailure* scar and a shallow impact protuberance on the ventral side. The dorsal side presents scars of previous flake extractions. The edges are sharp, lacking evidence of use-wear.

#997. Item no. 2092-13304



Exc. nr.	Discovery date	Square-subsq.	Depth range Z(D)	Depth Z(datum)	UTM E (x)	UTM N (y)	Stratum	Stratig. comp. (SC)
X12	26/01/2017	L6-SE	-2.80/ -2.90	-2.85	283924.31	2724534.66	1219	C
Taxon code	Taxon definition	Length (mm)	Width (mm)	Thickness (mm)	Weight (g)	Raw material class		
Dx	Flake	18.3	20.4	5	1.98	V		

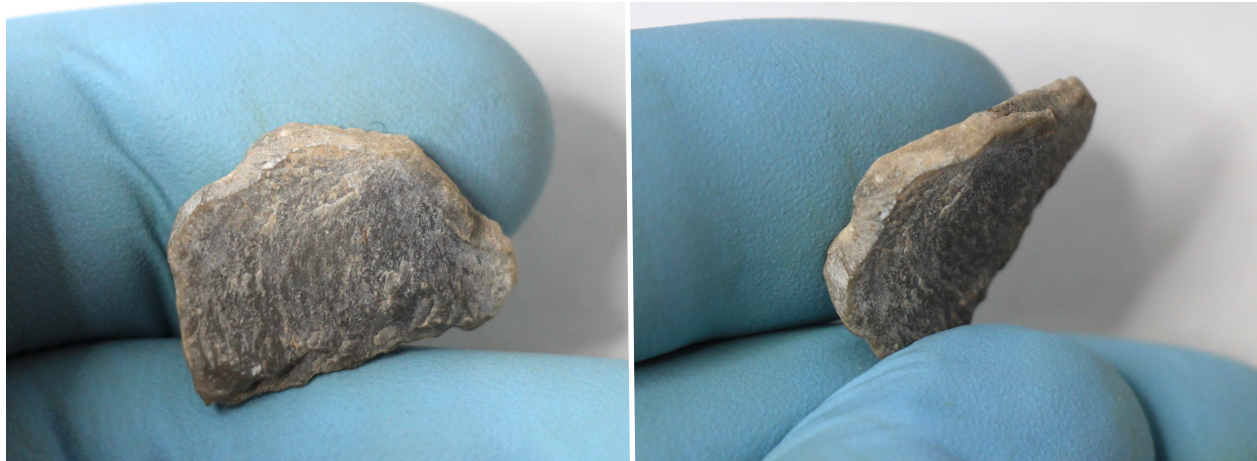


Characterization. This small, roundish artefact is a tertiary flake of green limestone, coated by yellowish sediment depositions. The small, punctiform, white-dotted platform is located at the intersection point between two adjacent planes of the proximal edge. The platform is part of a wider edge preparation, involving heavy grinding. There is no *erraillure* scar on the ventral side, neither an impact bulb, but the platform is slightly tilted towards the ventral face. The flake has a circular aspect that suggests anthropic modification, but, in reality, the shape was naturally obtained during extraction, and the edges lack evidence of use-wear.

#998. Item no. 2114-12759



Exc. nr.	Discovery date	Square-subsq.	Depth range Z(D)	Depth Z(datum)	UTM E (x)	UTM N (y)	Stratum	Stratig. comp. (SC)
X12	26/01/2017	L4-NE	-3.00/ -3.10	-3.03	283924.36	2724533.31	1219	C
Taxon code	Taxon definition	Length (mm)	Width (mm)	Thickness (mm)	Weight (g)	Raw material class		
Dx	Flake	15	19.2	3	0.89	V(b)		



Characterization. This item is a tertiary flake of black limestone, with a narrow, long, cortical proximal edge that bends over the ventral side at the point of location of the platform. The dorsal side is flatter, while the ventral side is recognized by the impact bulb. The platform is punctiform and difficult to distinguish. The distal edge is naturally straight. No use-wear or post-extraction modifications are present on this debitage element.

#999. Item no. 2122-13599



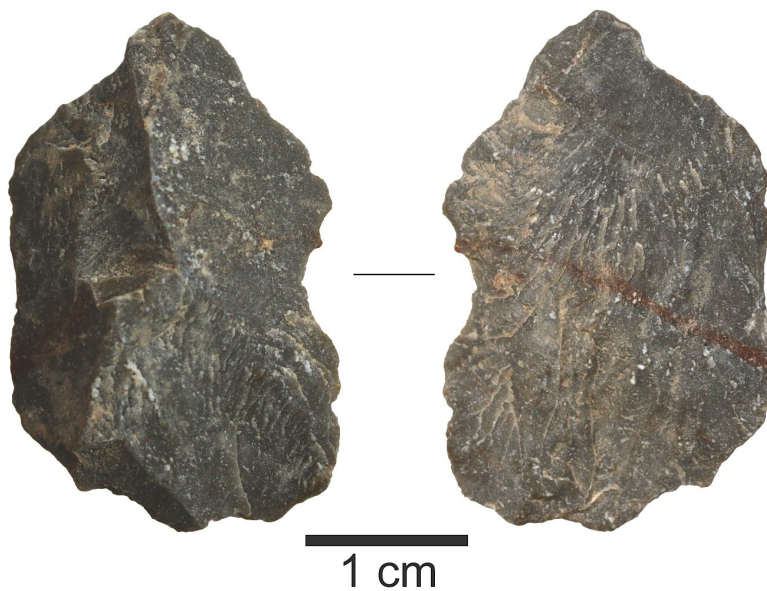
Exc. nr.	Discovery date	Square-subsq.	Depth range Z(D)	Depth Z(datum)	UTM E (x)	UTM N (y)	Stratum	Stratig. comp. (SC)
X12	27/01/2017	L5-SE	-3.00/-3.10	-3.02	283924.21	2724533.86	1219	C
Taxon code	Taxon definition	Length (mm)	Width (mm)	Thickness (mm)	Weight (g)	Raw material class		
Dx	Flake	25.7	20	4.8	2.42	V		



Characterization. This artefact is a tertiary flake of green limestone, with an inverted cordiform shape, a feathered distal end with a short hinge fracture scar visible from the ventral side, and with white carbonate depositions across the ventral face. The platform is small, punctiform, isolated, ground, clearly visible as a white-dotted impact spot on the ventral side, without a proper *erraillure* scar on the ventral face, but with an associated scar on the dorsal side, which indicates collateral effects from a previous failed attempt of extraction. The left side of the proximal edge is missing, apparently removed by an impact applied to the dorsal side of the flake, after extraction. This could be an anthropic modification, but the evidence is weak. The edges lack clear indicators of use-wear or other post-extraction modifications.

#1000. Item no. 2144-12765

Exc. nr.	Discovery date	Square-subsq.	Depth range Z(D)	Depth Z(datum)	UTM E (x)	UTM N (y)	Stratum	Stratig. comp. (SC)
X12	26/01/2017	M4-NW	-3.00/ -3.10	-3.05	283924.94	2724533.33	1219	C
Taxon code	Taxon definition	Length (mm)	Width (mm)	Thickness (mm)	Weight (g)	Raw material class		
Dx	Flake	32	20.5	6	3.65	V		



Characterization. This artefact is a thin, wide, tertiary flake of dark-green limestone. The original location of the platform is recognizable at the pointier end of the flake and confirmed by the direction of the impact striations, but the platform itself is no longer present, apparently removed by post-extraction tempering. The edges are thin and sharp, but lack use-wear or clear evidence of further modifications.

#1001. Item no. 3932-17444

Exc. nr.	Discovery date	Square-subsq.	Depth range Z(D)	Depth Z(datum)	UTM E (x)	UTM N (y)	Stratum	Stratig. comp. (SC)
X12	29/01/2019	K6	-	-	-	-	1220-1223	C
Taxon code	Taxon definition	Length (mm)	Width (mm)	Thickness (mm)	Weight (g)	Raw material class		
Dx	Flake	16.8	11	2.5	0.48	V		



Characterization. Unlike the rest of the assemblage, this small cortical flake was recovered from excess sediment retrieved from the profile during the stratum-by-stratum sampling of the stratigraphy for environmental ancient DNA (eDNA) analyses in early 2019. The platform is located at the corner between the proximal and right edges, paired with a small *erailleure* scar and a shallow impact protuberance on the ventral side. The distal end is feathered, and the left edge is thin, with a natural notch at the centre. There are no use-wear or post-extraction modifications, so this item only classifies as debitage.

#1002. Item no. 3932-17445

Exc. nr.	Discovery date	Square-subsq.	Depth range Z(D)	Depth Z(datum)	UTM E (x)	UTM N (y)	Stratum	Stratig. comp. (SC)
X12	29/01/2019	K6	-	-	-	-	1220-1223	C
Taxon code	Taxon definition	Length (mm)	Width (mm)	Thickness (mm)	Weight (g)	Raw material class		
Dx	Flake	17.6	21.8	4.5	2.1	V		



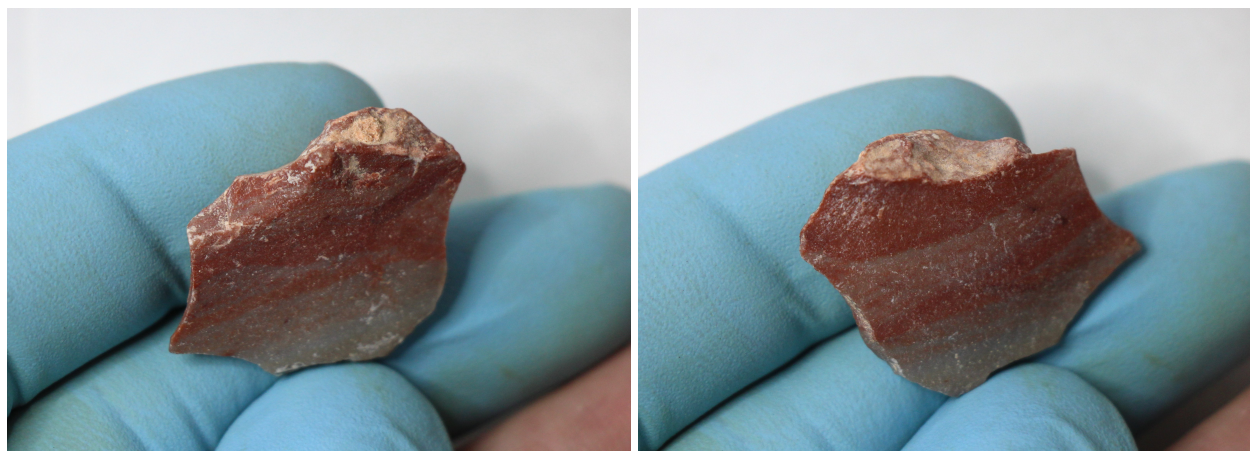
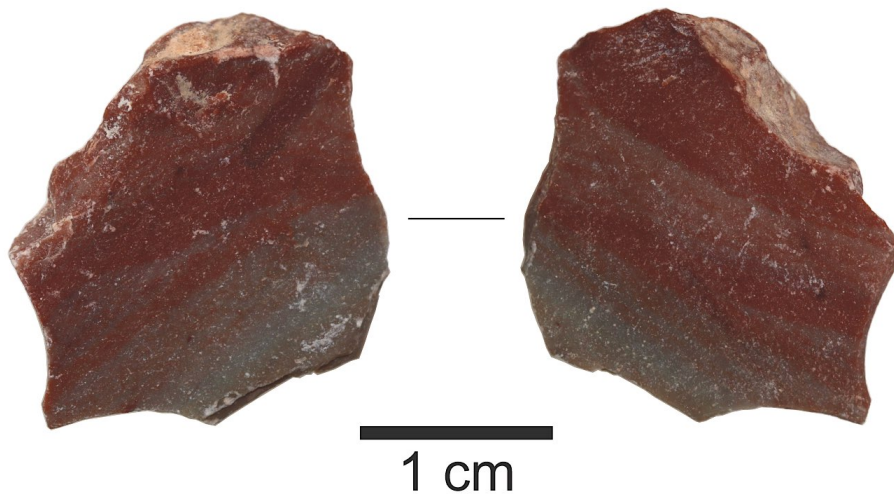
Characterization. This small item is the proximal fragment of a tertiary flake of green limestone. The fracture on the distal end and the lateral edges, they all present exclusively natural damage. Fine-grained dusty sediment coats the piece on both its sides. The platform is punctiform, at the centre of a thin proximal edge. It received repeated impacts before the extraction was successful, as indicated by thin, short-wide flake scars on



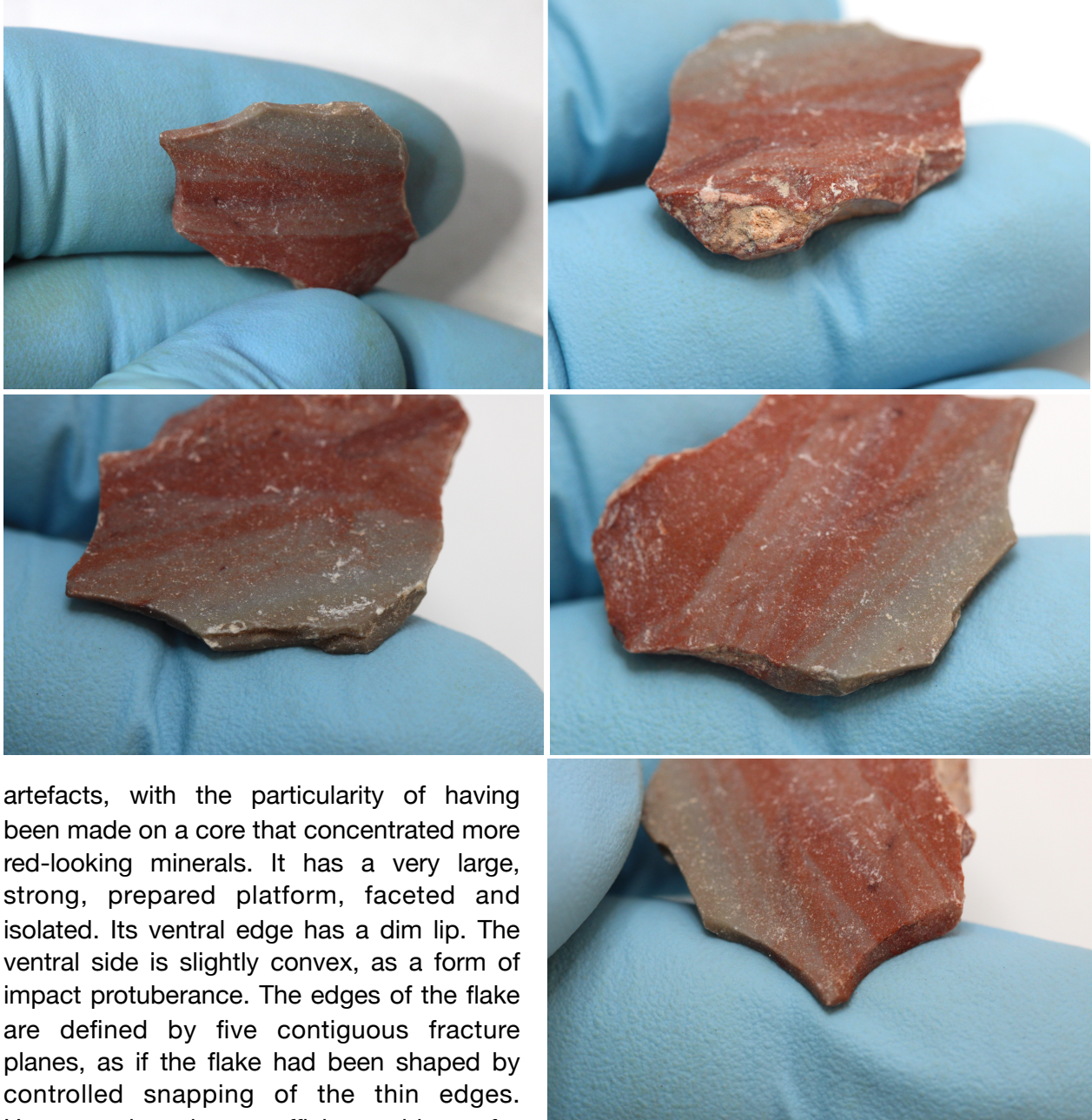
the flat dorsal side. The ventral side is convex, as a particular manifestation of an impact bulb, and the impact point is associated with an *eraille* scar. The item qualifies only as a debitage element.

#1003. Item no. 2132-13241

Exc. nr.	Discovery date	Square-subsq.	Depth range Z(D)	Depth Z(datum)	UTM E (x)	UTM N (y)	Stratum	Stratig. comp. (SC)
X12	26/01/2017	L6-NE	-2.90/ -3.00	-2.95	283924.16	2724535.31	1222	C
Taxon code	Taxon definition	Length (mm)	Width (mm)	Thickness (mm)	Weight (g)	Raw material class		
Dx	Flake	20.6	27.4	6.5	2.95	V		



Characterization. This fine artefact is a tertiary flake, obtained from a nicely-colored raw material: a fine-grained, banded green limestone with red vein intrusions. Despite its unique aspect, the raw material is the same green limestone as in the majority of the Chiquihuite

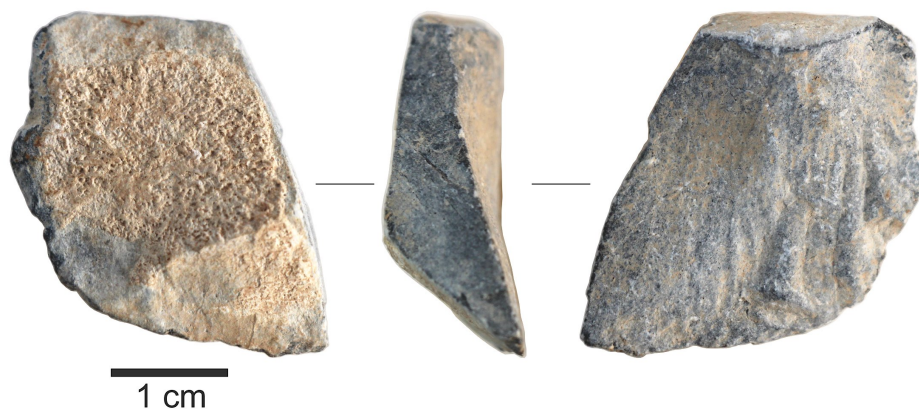


artefacts, with the particularity of having been made on a core that concentrated more red-looking minerals. It has a very large, strong, prepared platform, faceted and isolated. Its ventral edge has a dim lip. The ventral side is slightly convex, as a form of impact protuberance. The edges of the flake are defined by five contiguous fracture planes, as if the flake had been shaped by controlled snapping of the thin edges. However, there is no sufficient evidence for the human origin of this post-extraction modification, and no use-wear is visible along the marginal fracture planes. This artefact is probably a flake prepared to become a tool, but not yet utilized before being discarded.

#1004. Item no. 634-12162

Exc. nr.	Discovery date	Square-subsq.	Depth range Z(D)	Depth Z(datum)	UTM E (x)	UTM N (y)	Stratum	Stratig. comp. (SC)
X12	07/02/2016	K7	-3.40/ -3.50	-3.45	283923.26	2724536.22	1223	C

Taxon code	Taxon definition	Length (mm)	Width (mm)	Thickness (mm)	Weight (g)	Raw material class		
Dx	Flake	29.6	23.7	8.8	7.89	V(b)		



Characterization. This artefact is a thick, robust flake, extracted from a tabular core of black limestone, with its dorsal face covered by patina and thick yellow-brown carbonate concretions, while the ventral face displays a light-grey-colored coating. It has a large and heavy, flat, cortical platform, lipped on its ventral edge, and associated with a prominent impact bulb. The flake was extracted by strong impact. The right edge is a natural flat plane, with the matrix of raw material exposed. The distal and left edges are thin. The apparent use-wear visible on them is probably only natural damage, without clear evidence of anthropic origin. The flake was probably intended as a tool or preform, but not used before abandonment.

