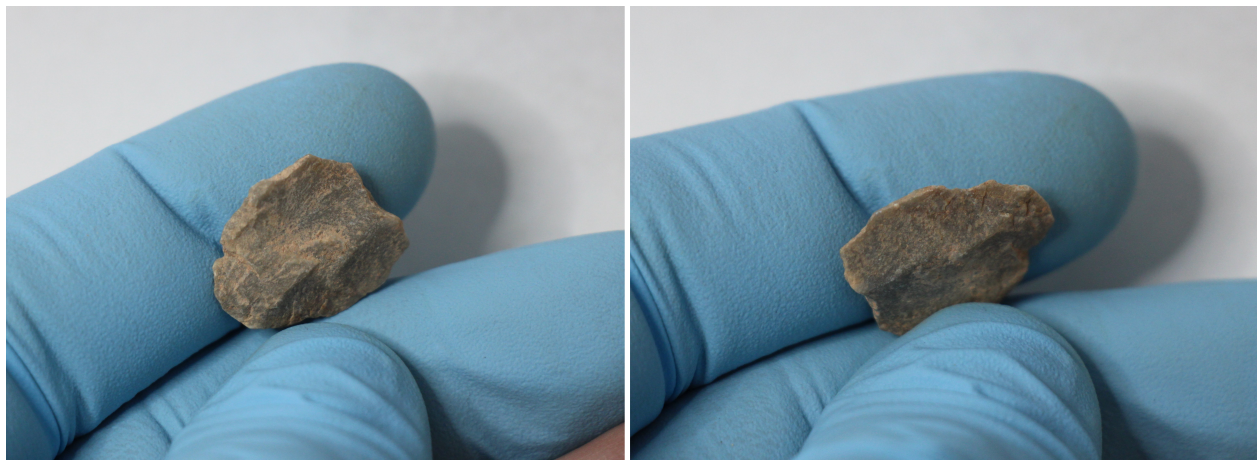


II.3. Taxon D: Flakes in general (8 items; #641–648)

#641. Item no. 2208-16683

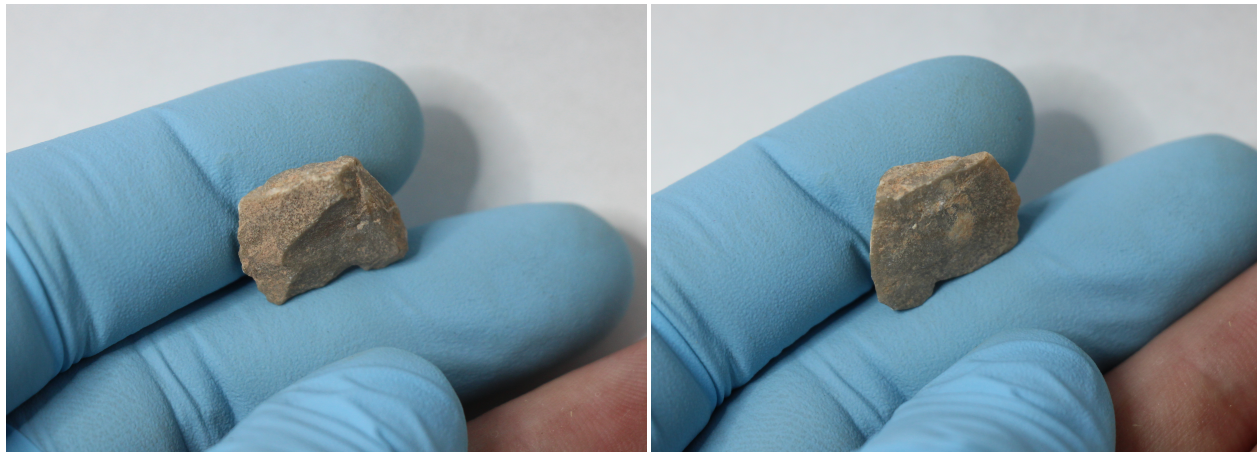
Exc. nr.	Discovery date	Square-subsq.	Depth range Z(D)	Depth Z(datum)	UTM E (x)	UTM N (y)	Stratum	Stratig. comp. (SC)
X16	09/01/2019	B2-NE	-	-	283906.07	2724524.44	1602	B
Taxon code	Taxon definition	Length (mm)	Width (mm)	Thickness (mm)	Weight (g)	Raw material class		
D	Flake	15.7	14.7	2.5	0.69	V		



Characterization. This small, thin, rounded artefact is a tertiary flake of green limestone, a debitage element without evidence of use-wear on its sharp edges. The proximal end is the wider one, but the platform is missing, probably lost during impact. A thin coating of fine sediment spreads over both sides.

#642. Item no. 2208-16684

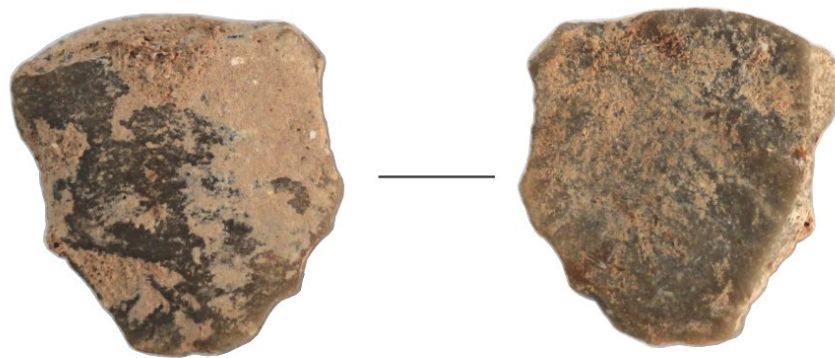
Exc. nr.	Discovery date	Square-subsq.	Depth range Z(D)	Depth Z(datum)	UTM E (x)	UTM N (y)	Stratum	Stratig. comp. (SC)
X16	09/01/2019	B2-NE	-	-	283905.77	2724524.09	1602	B
Taxon code	Taxon definition	Length (mm)	Width (mm)	Thickness (mm)	Weight (g)	Raw material class		
D	Flake	14.9	16.2	4.3	1.10	V		



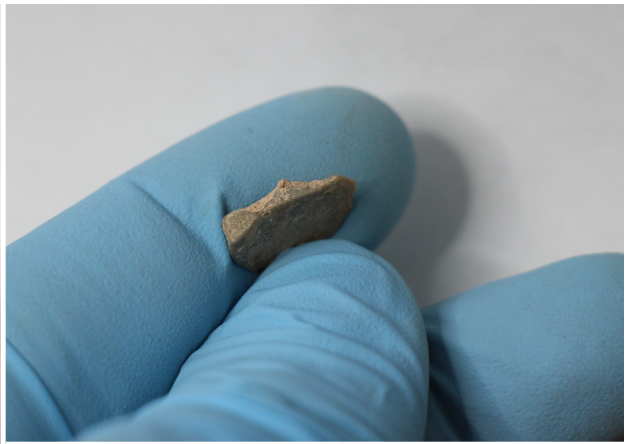
Characterization. This artefact is the distal fragment of a green limestone secondary blade or blade-like flake. It is a debitage element; the edges, although sharp around the piece, lack the use-wear evidence of having been used as a tool. The thicker end is not the platform, as its upper platform suggests that, in fact, it is a bending fracture plane, implying that the artefact may have been fractured intentionally in order to obtain a microlithic implement. The convexity of the proximal end of the ventral side suggests the platform was located not too far, though.

#643. Item no. 2981-16459

Exc. nr.	Discovery date	Square-subsq.	Depth range Z(D)	Depth Z(datum)	UTM E (x)	UTM N (y)	Stratum	Stratig. comp. (SC)
X16	19/01/2019	A3-SW	6.60/ 6.55	6.57	283904.77	2724524.84	1601/ 1604	B
Taxon code	Taxon definition	Length (mm)	Width (mm)	Thickness (mm)	Weight (g)	Raw material class		
D	Flake	12	12.7	2.3	0.35	V		



1 cm

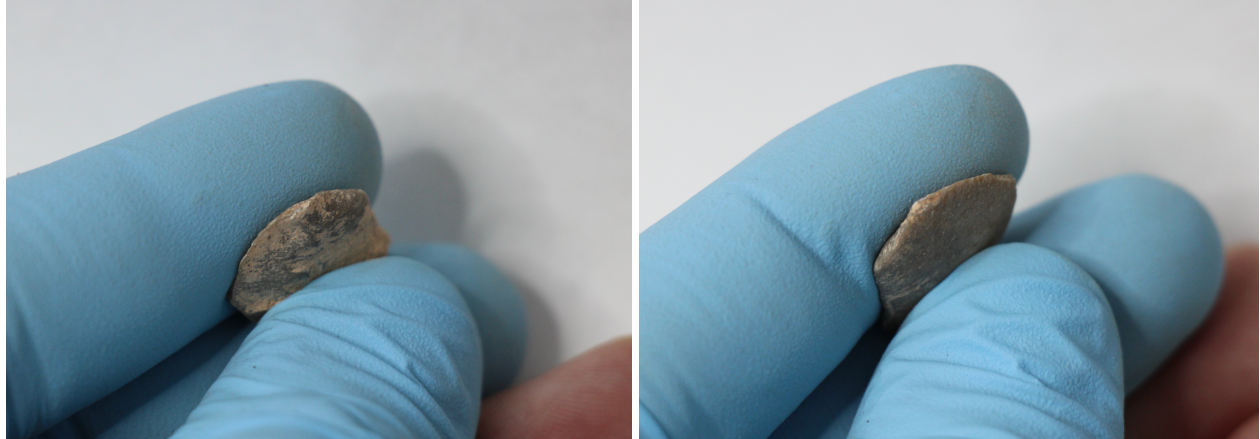


Characterization. This small debitage item is a tertiary flake of green limestone partially covered by sediment depositions, especially on its dorsal face. The location of the platform is difficult to determine with certainty, whether on the thicker edge or on one of the thin “peaks”, where a small lipped feature can still be observed. The edges show no evidence of use-wear.



#644. Item no. 3112-17172

Exc. nr.	Discovery date	Square-subsq.	Depth range Z(D)	Depth Z(datum)	UTM E (x)	UTM N (y)	Stratum	Stratig. comp. (SC)
X16	20/01/2019	B3-SE	6.00/ 5.95	5.96	283906.12	2724524.64	1604A/ 1605	B
Taxon code	Taxon definition	Length (mm)	Width (mm)	Thickness (mm)	Weight (g)	Raw material class		
D	Flake	17.8	15	4.3	1.31	V		



Characterization. This small item is a tertiary flake of green limestone, a debitage element without traces of use-wear or human-induced modifications after its separation from the parent core. The features from the dorsal side are infilled with cemented sediment. The platform is partly broken. The morphology, overall, is rather confusing. The thin, sharp, rounded edge, under magnifier glass, seems to reveal a micro-serrated profile, but a closer inspection shows that the features are natural, in fact terminations of impact striations from the ventral side.

#645. Item no. 3212-16507

Exc. nr.	Discovery date	Square-subsq.	Depth range Z(D)	Depth Z(datum)	UTM E (x)	UTM N (y)	Stratum	Stratig. comp. (SC)
X16	22/01/2019	A6-NW	-	5.76	283904.72	2724528.32	1605	B
Taxon code	Taxon definition	Length (mm)	Width (mm)	Thickness (mm)	Weight (g)	Raw material class		
D	Flake	22.2	21.3	5.5	2.55	V		



Characterization. This item is a tertiary flake of green limestone, with a morphology difficult to interpret. Both faces seem to contain flake extractions. The sediment concretions on the surfaces of the item complicate the appreciation of features. The proximal section is the wider end, but the platform is missing. The side presumed as ventral shows a convexity surfacing near the location where the platform was, also marked by an intrusive calcite crystal. The right edge appears to have been used, with fracture plane on the thin margin.

#646. Item no. 4016-17419

Exc. nr.	Discovery date	Square-subsq.	Depth range Z(D)	Depth Z(datum)	UTM E (x)	UTM N (y)	Stratum	Stratig. comp. (SC)
X16	06/02/2019	C4-SE	-	5.66	283907.15	2724525.87	1605	B
Taxon code	Taxon definition	Length (mm)	Width (mm)	Thickness (mm)	Weight (g)	Raw material class		
D	Flake	20	16.7	5	1.59	V		

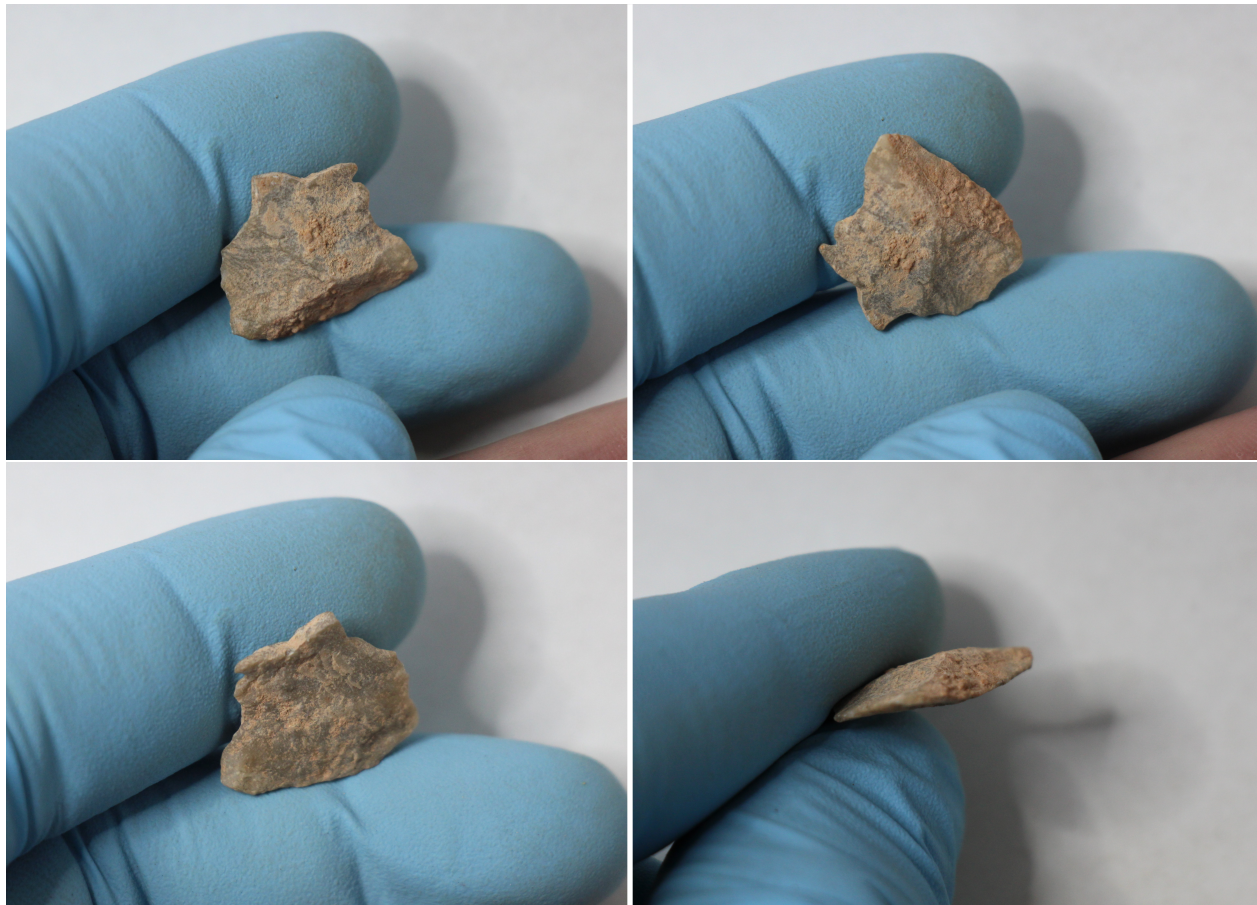


Characterization. This item is an ogival tertiary flake, coated by fine-grained sediment, with a flat proximal edge representing a fracture plane, apparently retouched edges, and a rounded distal tip. However, the post-extraction human interventions cannot be properly assessed, and the possible function of the flake cannot be defined beyond being a simple piece of debitage.

#647. Item no. 3221-16508

Exc. nr.	Discovery date	Square-subsq.	Depth range Z(D)	Depth Z(datum)	UTM E (x)	UTM N (y)	Stratum	Stratig. comp. (SC)
X16	21/01/2019	B1-NW	6.40/6.35	6.37	283905.62	2724523.34	1607	B

Taxon code	Taxon definition	Length (mm)	Width (mm)	Thickness (mm)	Weight (g)	Raw material class		
D	Flake	15.1	17.5	3.6	0.83	V		



Characterization. This small artefact is a thin (seemingly secondary) flake of green limestone, with both its surfaces affected by cemented sediment concretions. The proximal section is recognizable as the narrower end, but the platform is missing. The ventral side has a rough micro-topography. The edges present no evidence of use-wear.

#648. Item no. 3556-16348

Exc. nr.	Discovery date	Square-subsq.	Depth range Z(D)	Depth Z(datum)	UTM E (x)	UTM N (y)	Stratum	Stratig. comp. (SC)
X16	28/01/2019	C2-SW	-	5.95	283906.95	2724523.99	1607/ 1608A	B
Taxon code	Taxon definition	Length (mm)	Width (mm)	Thickness (mm)	Weight (g)	Raw material class		
D	Flake	26	25.4	7.5	6.32	V(b)		



Characterization. This is a flake of coarse black limestone, with brown mineral intrusions. The platform area is broken, apparently by a recent, post-depositional fracture that caused two flake scars over the dorsal side. The ventral side is convex, as a particular form of impact bulb. The dorsal side contains the extraction of another flake, an *outrépassé* flake, apparently extracted



from the same platform area after the extraction of this flake. This left a rounded, smoothed profile on the distal edge. To the right from this rounded edge, where the distal edge forms the inflection point with the right edge, the margin of the flake seems to present a small percussion retouch, not longer than 6 mm, formed by three contiguous retouch scars. The right edge appears to reveal certain degree of polish and modification. These elements suggest the flake was modified, but the evidence is insufficient.

