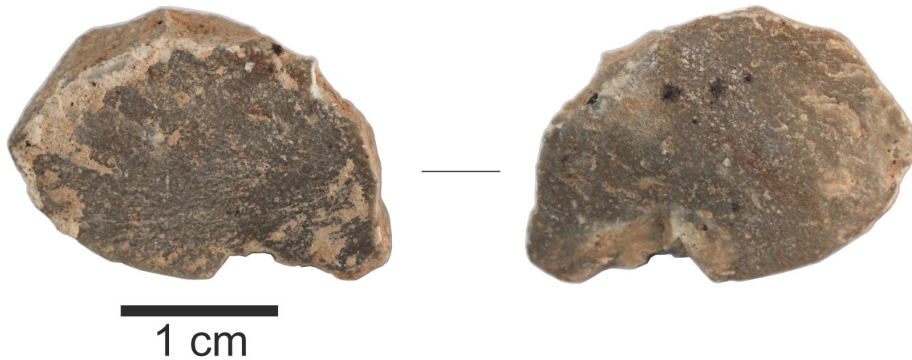


## II. Excavation X-16, stratigraphic component B (SC-B; 339 artefacts, numbers 629–967)

### II.1. Taxon B: Cores (9 items; #629–637)

#### #629. Item no. 2220-16688

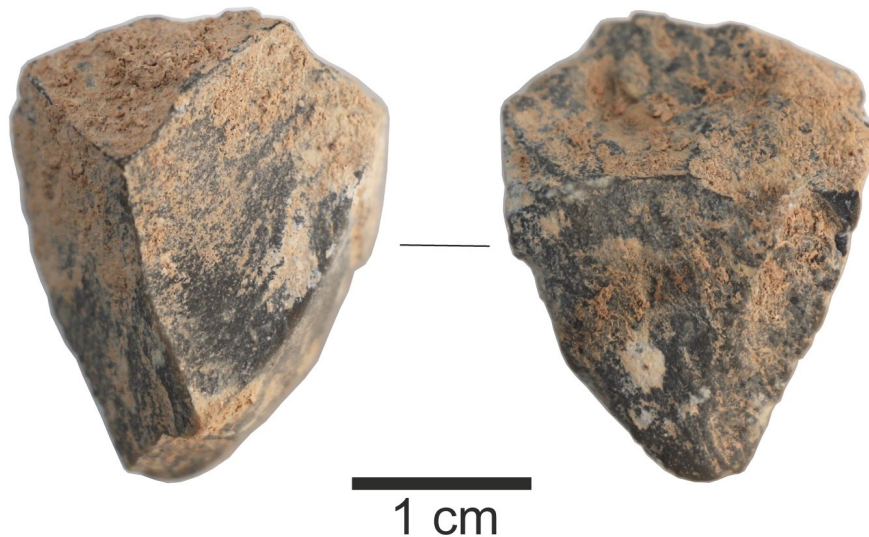
Exc. nr.	Discovery date	Square-subsq.	Depth range Z(D)	Depth Z(datum)	UTM E (x)	UTM N (y)	Stratum	Stratig. comp. (SC)
X16	10/01/2019	C3-SW	-	-	283906.82	2724524.84	1602	B
Taxon code	Taxon definition	Length (mm)	Width (mm)	Thickness (mm)	Weight (g)	Raw material class		
Dx, B	Flake, Core tablet	26.2	17.5	6	3.21	V		



**Characterization.** This artefact is a green limestone flake with all the attributes of a core tablet, meaning that it was a tablet-like section removed from the upper (proximal) end of a core, theoretically a blade core, through an intentional lateral impact meant to produce a refreshed platform area that would ensure the continuation of the extractions from that core. As it usually happens with core tablets, this item also has one sharper edge and one thicker edge that contains the profiles of previously obtained bladelet scars. This edge is uniformly covered by sediment concretions, same as parts of the dorsal side of the core tablet, which would correspond to the surface of the platform area of the presumed parent blade core. The ventral side of the core tablet is recognized by its convexity, which is a form of impact bulb. It is not entirely clear on which specific point of the prismatic edge the extraction impact had landed. Such an item stands out among the reliable indicators of human intentionality.



**#630. Item no. 2921-16281**



Exc. nr.	Discovery date	Square-subsq.	Depth range Z(D)	Depth Z(datum)	UTM E (x)	UTM N (y)	Stratum	Stratig. comp. (SC)
X16	18/01/2019	A3-SW	6.65/6.60	6.63	283904.77	2724524.69	1601/1604	B
Taxon code	Taxon definition	Length (mm)	Width (mm)	Thickness (mm)	Weight (g)	Raw material class		

B	Core	26.6	20.9	13	7	V		
---	------	------	------	----	---	---	--	--

**Characterization.** This small, angular item is, probably, a core of dark-green limestone, used for the extraction of flakes. The piece is decorticated, and covered partially by yellow-brown sediment concretions. At least two flake scars are evident, extracted from opposite faces of the core, but seemingly originating in the same platform area.



**#631. Item no. 2596-16277**

Exc. nr.	Discovery date	Square-subsq.	Depth range Z(D)	Depth Z(datum)	UTM E (x)	UTM N (y)	Stratum	Stratig. comp. (SC)
X16	12/01/2019	B2-SW	6.50/6.45	6.47	283905.67	2724523.89	1601/1604	B
Taxon code	Taxon definition	Length (mm)	Width (mm)	Thickness (mm)	Weight (g)	Raw material class		
B	Core	25	26	18.7	13.69	V		



**Characterization.** This prismatic item of green limestone, with thick sediment concretions adhered to its surface, is probably a core, although — as in the case of most items in this category — its anthropic origin can be questionable. It has a roughly pyramidal shape, with a large flat surface presumably used as platform for the extraction of bladelets or flakes around the circumference. However, only two or three of the blade scars are defensible as artificial. The platform area itself was probably produced by a transversal extraction, in the manner of a



core tablet. This is supported by the slightly convex surface and by the presence of impact striations radiating away from an impact point visible on the edge of the flat surface, on the exterior of the core.



**#632. Item no. 2486-16275**



1 cm



Exc. nr.	Discovery date	Square-subsq.	Depth range Z(D)	Depth Z(datum)	UTM E (x)	UTM N (y)	Stratum	Stratig. comp. (SC)
X16	13/01/2019	A6-SE	-	5.86	283905.16	2724527.54	1604A	B
Taxon code	Taxon definition	Length (mm)	Width (mm)	Thickness (mm)	Weight (g)	Raw material class		
B	Bladelet core	21	17	16	8.88	V		



Characterization. This is a possible bladelet core, although the artificial nature of this item of green limestone is not certain. It only reveals two blade-like extractions, on different faces, and originating from different platform areas.

**#633. Item no. 3075-16286**



Exc. nr.	Discovery date	Square-subsq.	Depth range Z(D)	Depth Z(datum)	UTM E (x)	UTM N (y)	Stratum	Stratig. comp. (SC)
X16	20/01/2019	C2-SE	5.95/ 5.90	5.91	283907.27	2724523.59	1604A	B
Taxon code	Taxon definition	Length (mm)	Width (mm)	Thickness (mm)	Weight (g)	Raw material class		
B	Core?	34.3	21.5	16.5	10.51	V		



**Characterization.** This peculiar item of dark-green limestone is another item with questionable human origin, because most of its surfaces, after a closer inspection, look rather natural, with apparent natural eroded flat planes. The interpretation of this object with a biconvex cross-section and turtle-back aspect is that of a core with centripetal extractions; or, probably an incipient reduction. There are flake extractions from this item, but most of the surfaces are rather natural, which makes this item not entirely reliable as a human-made artefact, principally because not all its morphological features stand as of anthropic origin. On the other hand, considering that certain limestones can still produce flat separation planes when flaked, and adding in the argument of the symmetrical “turtle-back-like”, “Mousterian”-like shape - with a wavy circumference seemingly produced by alternating flaking – the item can remain for serious consideration within this artefactual category.



**#634. Item no. 3493-16291**

Exc. nr.	Discovery date	Square-subsq.	Depth range Z(D)	Depth Z(datum)	UTM E (x)	UTM N (y)	Stratum	Stratig. comp. (SC)
X16	28/01/2019	C4-SW	-	5.78	283906.81	2724525.83	1604A	B
Taxon code	Taxon definition	Length (mm)	Width (mm)	Thickness (mm)	Weight (g)	Raw material class		
B	Core?	24.6	22.2	16.3	7.63	V		



**Characterization.** This small item of green limestone, coated by yellow-brown sediment concretions, is a possible multi-directional core for the obtention of small flakes. Its human origin is questionable, but most of its facets are decorticated and slightly concave, suggesting intentional flake extractions.



**#635. Item no. 3096-16287**

Exc. nr.	Discovery date	Square-subsq.	Depth range Z(D)	Depth Z(datum)	UTM E (x)	UTM N (y)	Stratum	Stratig. comp. (SC)
X16	20/01/2019	B3-SE	6.06/ 6.00	6.03	283906.32	2724524.84	1604A/ 1605	B
Taxon code	Taxon definition	Length (mm)	Width (mm)	Thickness (mm)	Weight (g)	Raw material class		
B	Core?	31.4	30.5	10.5	11.24	V(b)		

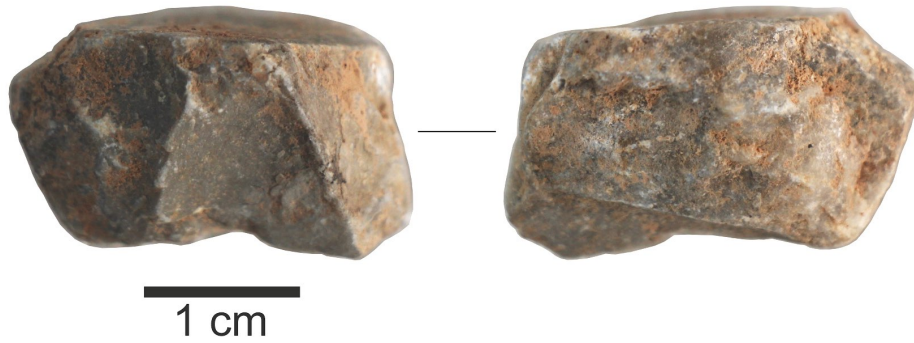


Characterization. This item of surface-eroded black limestone is a possible core, but its anthropic origin is questionable and uncertain. It presents only one secure extraction, one that occupies most of one of its sides. The other face is rather natural in its configuration.



**#636. Item no. 2501-16276**

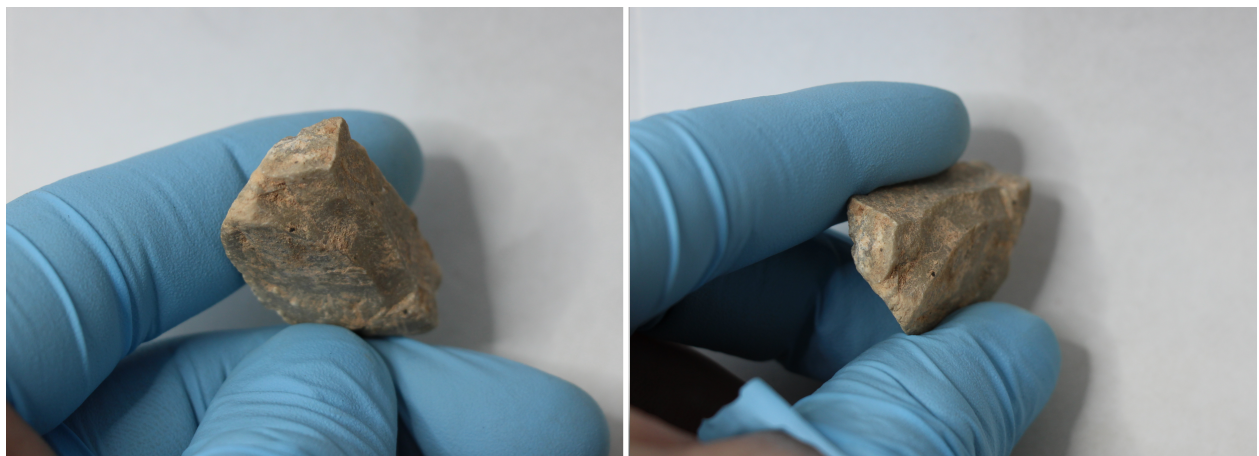
Exc. nr.	Discovery date	Square-subsq.	Depth range Z(D)	Depth Z(datum)	UTM E (x)	UTM N (y)	Stratum	Stratig. comp. (SC)
X16	13/01/2019	C3-SW	-	5.93	283906.60	2724524.54	1604A/ 1605	B
Taxon code	Taxon definition	Length (mm)	Width (mm)	Thickness (mm)	Weight (g)	Raw material class		
B	Core?	25	16.3	13.5	6.83	V		



**Characterization.** This small, pebble-size item of green limestone is a possible multi-directional bladelet core, although its human origin is not entirely certain. A flat surface served as platform for the extraction of two small flakes, while another section was used as origin for the extraction of two adjacent bladelets.

**#637. Item no. 3581-16293**

Exc. nr.	Discovery date	Square-subsq.	Depth range Z(D)	Depth Z(datum)	UTM E (x)	UTM N (y)	Stratum	Stratig. comp. (SC)
X16	01/02/2019	C2-SE	-	5.97	283907.45	2724523.60	1607/1608A	B
Taxon code	Taxon definition	Length (mm)	Width (mm)	Thickness (mm)	Weight (g)	Raw material class		
B	Blade core	31.5	16.5	13.2	10.15	V		



**Characterization.** This item is a possible blade core, made on a tabular nodule of green limestone. It contains two adjacent blade scars extracted from opposite directions, which are more convincing than the rest of the facets around the prismatic artefact. The presumed blades



were probably extracted along the natural ridges of the tabular blank.

