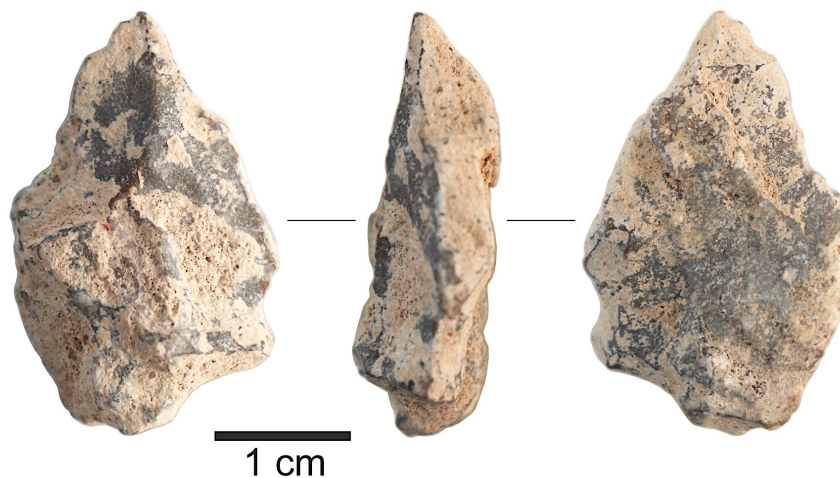


II.13. Taxa Hk, HL, and Hm:
Bifacial points or preforms, points on plaquette, point-like effigies
(3 items; #957–959)

#957. Item no. 3037-17293

Exc. nr.	Discovery date	Square-subsq.	Depth range Z(D)	Depth Z(datum)	UTM E (x)	UTM N (y)	Stratum	Stratig. comp. (SC)
X16	20/01/2019	A6-SW	-	5.86	283904.61	2724527.96	1605	B
Taxon code	Taxon definition	Length (mm)	Width (mm)	Thickness (mm)	Weight (g)	Raw material class		
Hk	Bifacial point?	31.3	19.8	9.5	5.58	V		

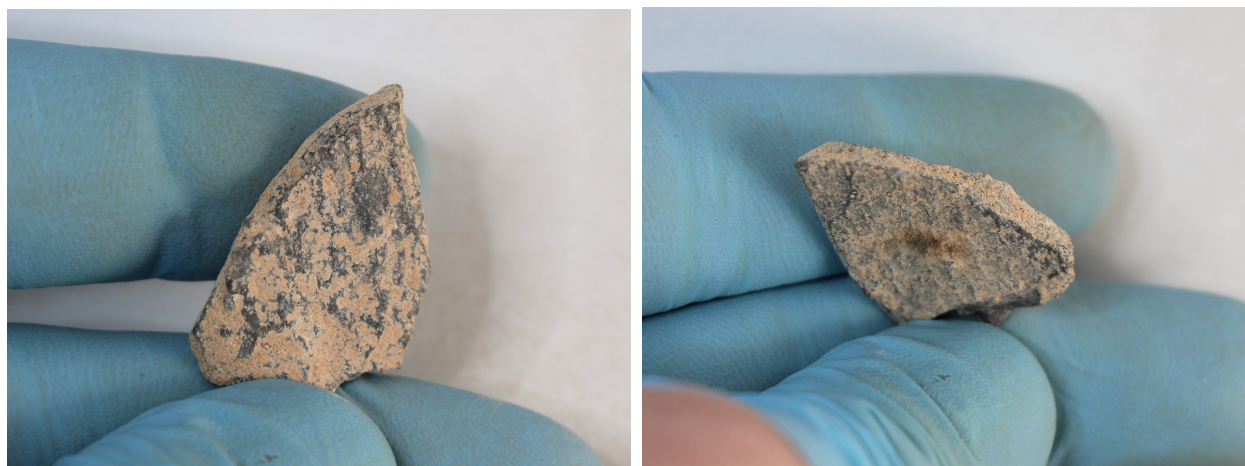


Characterization. This artefact is the failed and abandoned preform of a bifacial point on flake, made of fine-grained green limestone and coated by cemented carbonate sediments. The blank is a flake of undetermined type. It shows extractions on both faces, produced in a coarse and disordered manner, resulting in step terminations and accumulating stacks. This item is probably the result of teaching/learning, as it displays common mistakes among stone-flaking beginners.



#958. Item no. 3356-17342

Exc. nr.	Discovery date	Square-subsq.	Depth range Z(D)	Depth Z(datum)	UTM E (x)	UTM N (y)	Stratum	Stratig. comp. (SC)
X16	23/01/2019	B5-SW	-	5.81	283905.56	2724526.94	1605	B
Taxon code	Taxon definition	Length (mm)	Width (mm)	Thickness (mm)	Weight (g)	Raw material class		
HL	Point on plaquette?	27.4	18.1	3.8	2.36	V(b)		



Characterization. This item of fine symmetrical ogival shape is a point-like item, made on a thin plaquette (lamina) of black limestone that presents recent damage on its proximal edge. The shape is defined by the converging convex margins, and it was obtained retouching the edges by abrupt percussion along their entire length. The slight concavity of one of the faces suggests that the original blank may have actually been a flake. Apart from the mentioned recent damage, no use-wear or further modifications are visible on the margins of the item.

#959. Item no. 4068-17422

Exc. nr.	Discovery date	Square-subsq.	Depth range Z(D)	Depth Z(datum)	UTM E (x)	UTM N (y)	Stratum	Stratig. comp. (SC)
X16	07/02/2019	C4-NW	-	5.59	283906.90	2724526.10	1605	B
Taxon code	Taxon definition	Length (mm)	Width (mm)	Thickness (mm)	Weight (g)	Raw material class		
HM	Point effigy on lamina	28	21.9	6.8	4.78	Ca		



Characterization. This artefact is a cordiform or tear-drop shaped, point-like effigy, made by marginal abrupt percussion on a laminar blank of yellowish calcite, and almost identical to specimens alike recovered from X-12. The multiple fracture planes can be easily noticed around the entire contour of the artefact, apparently all produced by impacts coming from the direction of the dorsal, concretions-covered, side. The item is remarkably symmetrical.

